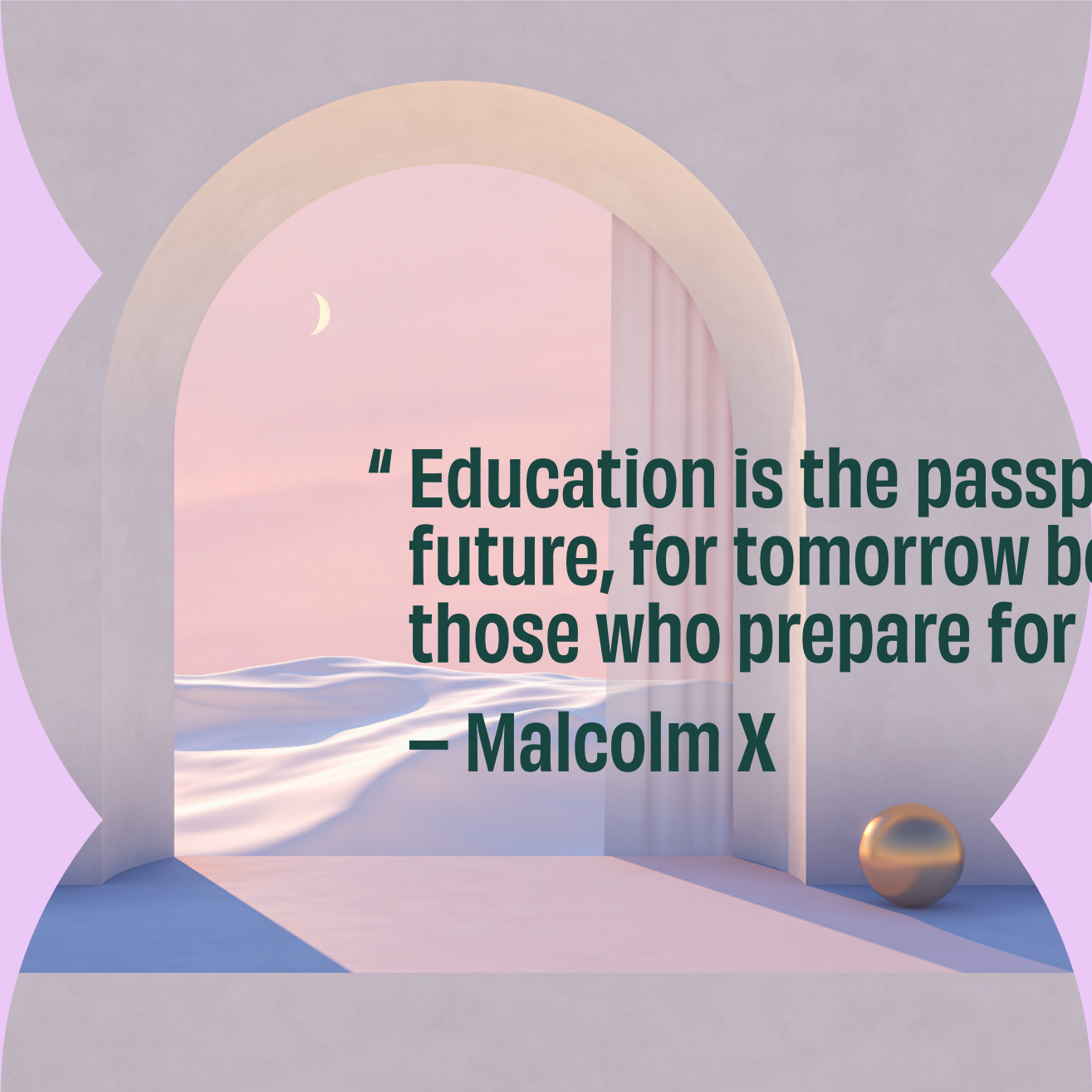


The Mind Lab | Tech Futures Lab | Earth Futures Lab

2023 Prospectus



**" Education is the passport to the
future, for tomorrow belongs to
those who prepare for it today."
– Malcolm X**

Contents

Introduction

A note from the Founder & CEO	02
Who we are	04
A note from our Academic Director	06

Our Faculties

About our faculties	08
The Mind Lab, Tech Futures Lab, Earth Futures Lab	09

Overview

Choose academyEX for a unique learning experience	10
Build your future – a range of flexible ways to learn	12

Learning with The Mind Lab

About The Mind Lab	14
Student stories	16
Micro-credential in Digital & Collaborative Teaching & Learning	18
Micro-credential in Digital Skills for the Workplace	20
Postgraduate Certificate in Digital & Collaborative Learning	22
Master of Contemporary Education	25
Postgraduate Certificate in Leading Change for Good	28
Master of Change & Organisational Resilience	31
Key dates	34

Learning with Tech Futures Lab

About Tech Futures Lab	36
Student stories	38
Micro-credential in Disruptive Technologies	40
Micro-credential in Entrepreneurship	42
Micro-credential in Understanding Software Development Processes & Tools	44
Master of Technological Futures	46
Key dates	50

Learning with Earth Futures Lab

About Earth Futures Lab	52
Student stories	54
Micro-credential in Leading Beyond Sustainability	56
Micro-credential in The Internet of Things for Sustainability	58
Advancer: Impact Investing	60
Key dates	61

Expand your learning experience

Our community	63
Our learning spaces	65
The academyEX team	67

Student support

Supporting our learners	69
Scholarships & funding	71
International students	73

Important information

How to apply	75
Policies & governance	77
Fees, Early Bird Savings & refunds	79
Contact us	80

Welcome to academyEX, an independent, globally focused higher education institute dedicated to helping professionals develop deeper understanding on what is possible in our collective future.

I'm a firm believer that through learning we refresh our thinking, improve our reasoning and gain clarity amid complexity.

— Frances Valintine CNZM
Founder & CEO of academyEX



A note from the Founder & CEO

Our commitment is to develop connections, networks and context for our learners in a world that is rapidly changing. We do this by immersing students in conversations about the future, with thought leaders, industry experts, academics, influencers and innovators.

Today, more than ever before, our world is immersed in technology, data and systems that are interconnected, giving rise to entirely new industries, challenges and opportunities. These emergent situations push us into unfamiliar environments, ones that ask us to think deeper yet faster to keep pace with change. It's in these situations that we feel uncertainty about how we see our futures playing out.

academyEX is our answer to how we lean into that uncertainty and use that energy to fuel a positive future.

We design learning that empowers. To improve capability to respond to new economic paradigms; consumption-without-consequence; societal shifts; globalisation; political upheaval; environmental degradation and technological advancement. We encourage asking the hard questions and talking through implications, considerations and benefits.

Our three core faculties place focus on areas we believe are crucial to advance knowledge and capability: education, sustainability and emerging technologies. But we don't silo learning, opting to encourage discussion and critical engagement across programmes and faculties.

As educators, our role is to distil complexity and help people develop confidence in new and emerging ways of working and living. As people, our mission is to make this a place that anyone can come to learn, unlearn and relearn.

We place priority on fostering community, because connection to broad groups of interesting people develops confidence, opens minds and expands potential for ideas to become action.

We teach context over content, founded on contemporary evidence and insight. We don't use leadership buzzwords, flash-in-the-pan management frameworks or case studies based on success from a different time.

Our learners come from many industries, arriving from multiple pathways and at different stages in life. Some come to better understand how to build essential new skills for job advancement. Others are here to strive for a greater sense of contribution or purpose. Many seek the knowledge to shape change or impact from within a sector.

So whether you join academyEX as a learner, a contributor, researcher or business partner we welcome the ability to collaborate, share insights, build collective knowledge and create experiences to inform new concepts, ideas and solutions.

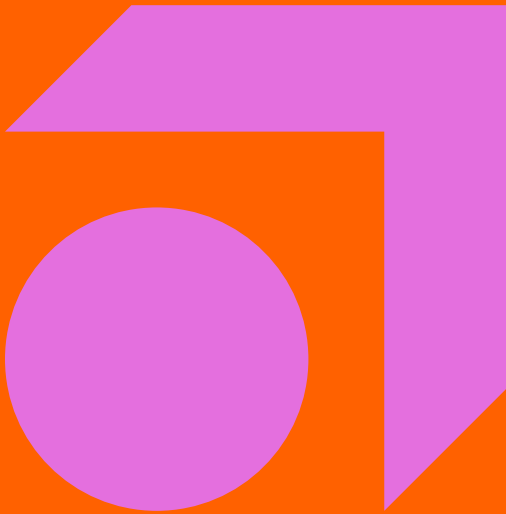
Learning takes commitment, but we are here to reduce as many of the pain points as possible and make your learning the best you've experienced.

I believe we can positively change the world, one conversation at a time.

Come and explore what your future holds.

Frances Valentine CNZM
Founder and CEO of academyEX

Who we are



Our qualifications and programmes have been designed to give you skills and capabilities to innovate, lead change and redefine what tomorrow could be. We're here to help you step into the future with refreshed confidence in your ability to create impact. Wherever and however you want that to happen.

At academyEX we look forward with open minds to what our futures could hold. We do that with sound experience behind us. academyEX today is an evolution of our ongoing commitment to innovate education so everyone can embrace lifelong learning.

Founder and CEO Frances Valintine CNZM created The Mind Lab in 2013, followed by Tech Futures Lab soon after in 2016. These postgraduate schools have supported thousands of educators, business professionals and community leaders to become innovators, change-makers and entrepreneurs around Aotearoa New Zealand. More recently we established Earth Futures Lab to support open minds and nurture brilliant ideas that rethink and redesign our systems for a society that enables environmental regeneration.

These three learning faculties come together under the umbrella of academyEX, learning excellence like no other.

Through our dynamic and flexible learning environments, you learn using context not content, for contemporary knowledge you can use now, and guide your decisions for the future.

Our programmes look different to traditional education. We've purposefully designed them for where we're headed, not where we've been, gathering together academic rebels, industry experts and big thinkers who push the boundaries of what excellence can look like.

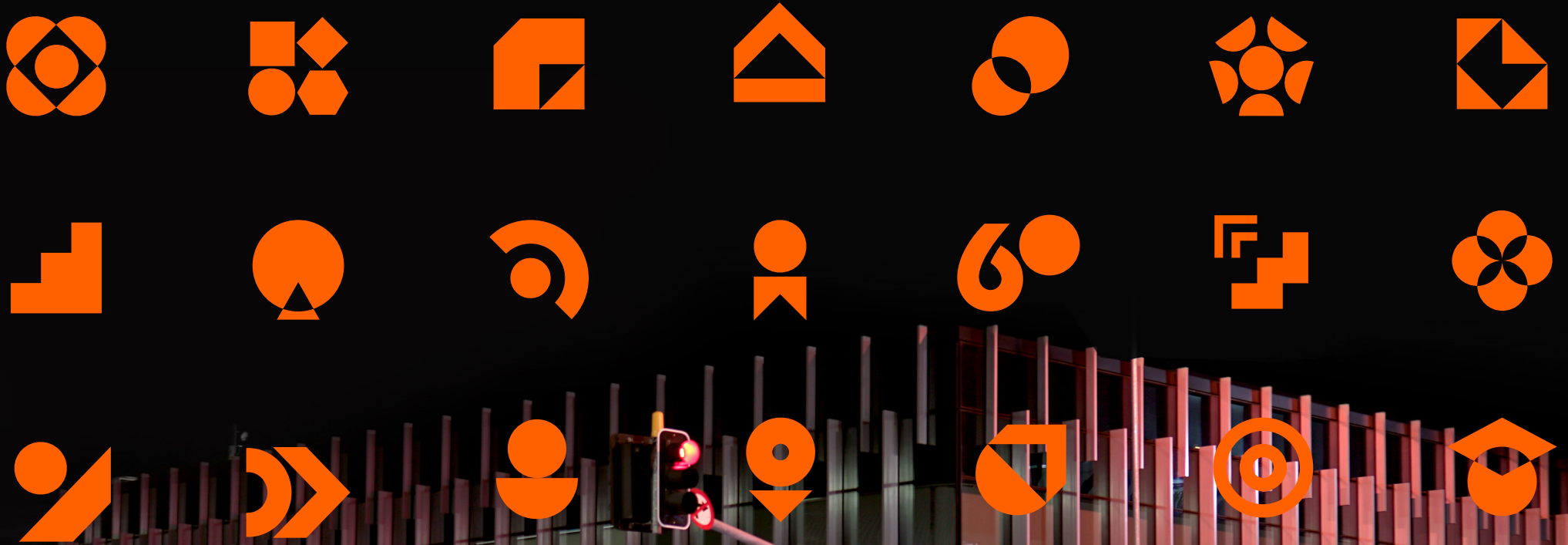
We choose the practical over the theoretical so you can take what you learn with us into the 'real world' to embed into your workplace, with your teams, and through your community for exponential impact. You'll notice most of our programmes are not profession-specific. Instead we take a multi-disciplinary approach, to recognise that for a thriving future, we need people who are systems thinkers, creatively-led and digitally capable, no matter what they do.

There are a range of ways to get involved in learning with academyEX, from short courses to master's degrees. Programmes are perfect on their own to supercharge your skills but can be stacked together to expand your opportunities.

Whichever option you choose, you can be sure you'll see your industry, your career and your future potential with fresh eyes and renewed optimism.

Welcome to the future. Welcome to academyEX.

academyEX (and its faculties; The Mind Lab, Tech Futures Lab, Earth Futures Lab) is a Tertiary Education Organisation registered by the Tertiary Education Commission (TEC) to deliver qualifications approved by the New Zealand Qualifications Authority (NZQA) under the provision of the Education Act 1989. Based on our NZQA external evaluation and review (EER) we have been classified as a Category 1 education organisation, with NZQA highly confident in both our Education Performance and Self-Assessment Capability





In a time when the greatest certainty is change itself, lifelong learning is key. That's why at academyEX we work to reimagine lifelong learning so with us it is accessible, inspiring, fun and practical and will reignite joy in the journey of endless exploration.

– Dr Hayley Sparks
Academic Director

A note from our Academic Director



We all need to maintain and extend the currency of our knowledge and skills. At academyEX we curate programmes in close consultation and collaboration with industry and community leaders, practitioners, academics, technologists and social entrepreneurs working at the forefront of change in Aotearoa New Zealand. This is not theory based learning, its real world applied capability building.

We are proud to provide innovative postgraduate programmes that build confidence, skills and capabilities that are in demand and necessary to thrive in a constantly changing world. We are proud that the design and delivery of our programmes disrupts the status quo of traditional postgraduate education. We focus on creating learning opportunities that are flexible for your needs, from short courses through to accredited micro-credentials, postgraduate certificates and master's programmes.

Learner wellbeing, safety, equity and inclusion are core to our commitment as educators. People are at the centre of everything that we do at academyEX. As a learner you are not just a number but a valued member of our community and will build meaningful connections with staff and other learners who you can lean on throughout the journey. Lifelong friendships and connections are a common added value from engaging with our community.

academyEX is a unique learning experience because we take the best bits of academia and pair those with new ways of thinking about postgraduate education that enable more people to see their possibilities and success.

We speak about 'facilitating learning' for professionals as you are already experts in your own context and practice. You don't always need a formal qualification to enrol in our programmes - professional life experience can be

equivalent. At academyEX you'll meet advisors, not supervisors; assessments are framed as an opportunity for you to apply your learning and enhance its value through critical feedback. For real impact that reaches beyond an individual, we make it possible for you to co-construct your learning goals and outcomes with us, to maximise the value of your learning for not just yourself, but your organisation or community.

If you have ever thought about engaging in formal education, perhaps for the first time, or returning after a career phase, we encourage you to explore the range of programmes that we offer. We're confident you will find something that will spark your interest and be delivered in a way that is accessible, relevant and can fit amongst your busy schedule.

Take the leap. Learning with academyEX might not be what you first imagine, but it will expand your horizons and enable you to go further than you might have expected. It'll give you the knowledge, skills and confidence to create impactful futures.

Dr Hayley Sparks
Academic Director, academyEX

Our Faculties

Across three faculties, we focus learning and action in areas we believe will support positive thriving futures. You may feel drawn to one more than others but through community opportunities you can connect and collaborate with learners across any faculty.

Our stackable learning means you can take a mix 'n match approach to building the skills, knowledge and network across programmes, no matter which faculty, so you have a customised toolkit to make change and innovate where it matters most to you.



The Mind Lab

Learning that develops leadership capabilities in educators, business and community leaders, so people and organisations can thrive.



Tech Futures Lab

Professional development for the edge you need to innovate, transform and disrupt the status quo in businesses or across industry.



Earth Futures Lab

Courses and qualifications to develop capabilities, innovations and actions that lead to equitable, sustainable outcomes.

Choose academyEX for a unique learning experience

As Aotearoa New Zealand's only private postgraduate school, we have developed a unique and innovative teaching and learning approach that challenges the status quo of education.

Rest assured, we are NZQA accredited and all our postgraduate programmes meet the strict criteria set down by New Zealand's qualification authority. Credits earned with us may be cross credited to other New Zealand and international educational institutions (at their discretion).



Our teaching and learning approach takes lead from kaupapa Māori values – values of the indigenous population of Aotearoa, New Zealand – grounded in ako (collaboration), manaaki (support), pono (honesty), and rangatiratanga (the right to self-determination or agency).

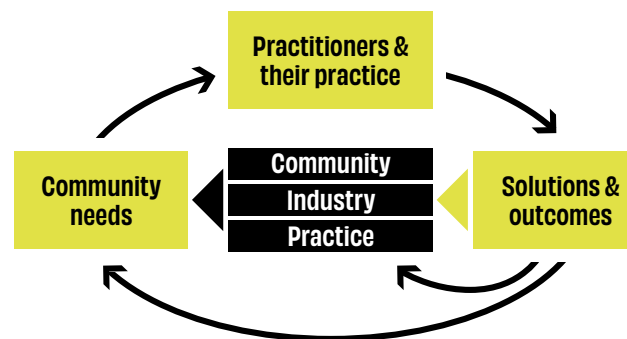
We don't 'teach', we facilitate. Our approach to learning is reciprocal – we encourage and foster knowledge exchange, robust conversation and strong positive relationships. You, the student, are the heart of all that we do.

This philosophy is realised in our strategy 'Te Ara Kōtihi' – the pathway to success. Although we recognise the importance of a shared purpose in today's changing world we also appreciate how diversity and varied perspectives can create unity.

We welcome your voice.

Our mātāpono / our values

Positive relationships between people and places are at the centre of our philosophy and values for both teaching and learning. Our mātāpono (values) guide staff, students, facilitators, practitioners and researchers to ensure we have our communities and colleagues at the heart of professional practice, study or research.



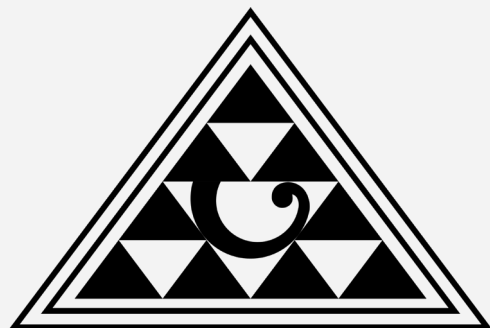
What this means for our learners

Guided by our Te Ara Kōtihi principles, we provide space and authentic opportunities for you to bring your whole self, your values and your purpose.

Assessments are real world applied projects, contextual to your role, your industry or your passion project. Projects can be delivered in a variety of ways – written, oral or mixed media, in English, te reo Māori or NZ Sign Language.

Collaboration is made easier with opportunities in and outside of programme learning through student support initiatives, such as ManaakiFono, Mahi Tahi, He Rourou, Tuia Te Kupu and Converge.

We respect diversity and create inclusive learning environments that are culturally responsive and sustainable. Our teaching facilitators actively engage in practice-relevant research to ensure what you learn is evidence based and research-informed.



Te Ara Kōtihi / the pathway to success

Koru / new life and growth

Our learners – the centre of everything we do, as well as human potential, growth, relationships and conversations, all of which are unique to our organisation.

Niho taniwha / teeth of the taniwha

Our organisation – our teams, staff, teachers, structures, processes and delivery, which all exist to support our learners.

Kōtihi / summit

Our success – what we are striving for, which is all of us working as a collective, combining our skills and knowledge, to create value and better outcomes for all our learners.



Build your future – a range of flexible ways to learn

Learning with academyEX gives you flexibility to choose to build skills, knowledge and a qualification that suits you and your goals.

We have five tiers of courses and programmes to choose from. Start small and get a taste for a new area of expertise or build your way to a master's degree with our stackable learning.

A master's degree made for you

With academyEX you can create your own pathway into a master's degree using our micro-credentials and postgraduate certificate programmes. It's a flexible way to tailor your knowledge and skills in specialised areas and still gain a master's degree that recognises your capability and expertise.

The way in which you stack courses needs to be carefully planned to ensure that you will complete with a coherent qualification and meet all graduate outcomes. Reach out to us at hello@academyex.com and we can discuss a personalised plan.

How it works: an example

STEP 1

Complete four micro-credentials across any of the academyEX faculties. Together, these add up to 60 credits.

STEP 2

Then complete a postgraduate certificate with us, earning a further 60 credits.

STEP 3

Stacked together this equals 120 transferable credits that can be a foundation into one of our master's programmes.

STEP 4

A master's proposal and capstone project is all you need to reach the 180 credits required for a master's degree.

Through your learning journey you've acquired practical knowledge and skills in specific areas you've been able to use right away, as well as a number of recognised qualifications. And to top it all off, you'll gain a master's degree that you've built around your needs and your goals.

Sampler

Duration: 2 weeks (2-3 hrs per week)

Format: Part-time / self-paced online learning

Cost: Free

Our free Sampler short courses are punchy introductions to emerging areas of expertise. They're a great way to explore new spaces and dip your toe into learning.

Advancer

Duration: 6 weeks (6-8 hrs per week)

Format: Part-time / self-paced online learning*

Cost: NZ \$400 (incl. GST) for domestic students*

Result: Digital Learning Badge

Our Advancer courses are perfect if you've got a need to know, now. There are no assessments but, you will still develop knowledge and practical skills you can use straight away.

***Note:** The Advancer Product Management course includes weekly facilitated online sessions and has a higher fee of NZD \$1,035 to reflect the inclusion of these live sessions.

Micro-credential

Duration: Range between 7 and 15 weeks

Format: Part-time / weekly facilitated online sessions / self-directed learning

Cost: NZ \$450 (incl. GST) for domestic students

Result: Level 7 or 8 NZQA micro-credential (15 credits)

Our micro-credentials give you a recognised NZQA qualification that will set you up with practical applied skills and a project output to use as evidence of your learning. Similar to university papers, you can stack our micro-credentials towards our master's degrees.

Postgraduate certificate

Duration: Range between 32 and 37 weeks

Format: Part-time / weekly facilitated online sessions / in-person full day block sessions over the programme / distance learning available

Cost: Check the programme information in this prospectus for costs

Result: Level 8 NZQA postgraduate certificate (60 credits)

Our postgraduate certificates are an ideal way to create the next step in your career. Practical and collaborative, these programmes are delivered in a part-time format so you can keep working while you look forward to what's next for you. You'll walk away with a strategic project you can use for change or innovation in whatever you want to focus on. Postgraduate certificates can also be stacked towards a master's degree with us.

Master's degree

Duration: One year full time or 18 months part-time

Format: Online learning and in-person residencies or block sessions / distance learning available

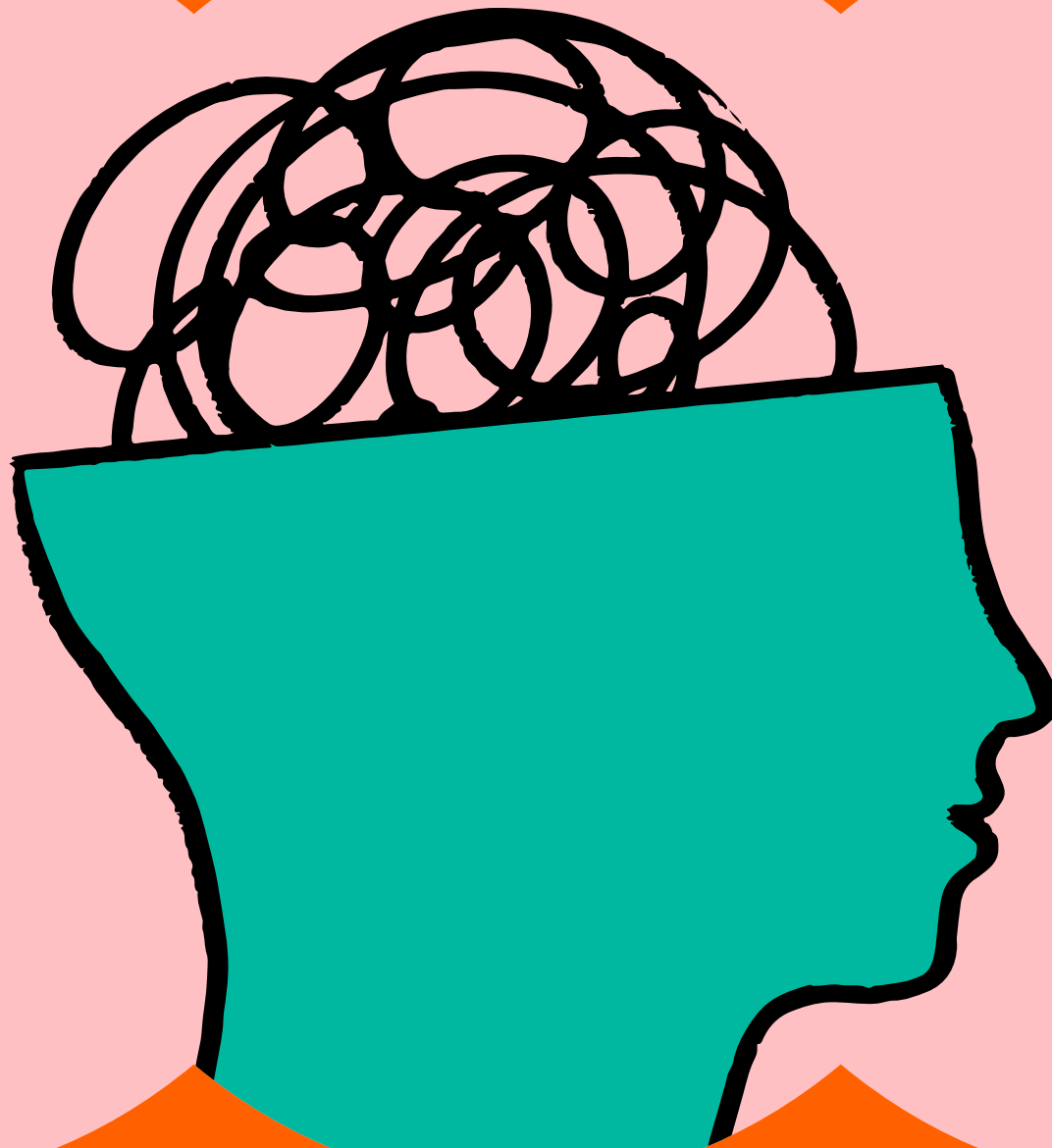
Cost: Check the programme information in this prospectus for costs

Result: Level 9 NZQA master's degree (180 credits)

Our master's degrees are the perfect platform to develop skills, academic credibility and expertise in an emerging area of practice across education, leadership or disruptive technologies. Choose to develop a real-world applied project that can deliver business outcomes, or take the research pathway and publish new knowledge in emerging practice areas.

International student prices

Costs for international students vary. See the [International students](#) section for a full outline of international fees.



The Mind Lab

For flourishing communities and organisations tomorrow, we need the ability to create resilient, dynamic and diverse environments today.

At The Mind Lab, we provide learning that develops leadership capabilities in educators, business and community leaders, so people and organisations can thrive.

The Mind Lab has been supporting educators and leaders for over 10 years to remain at the forefront of their practice.

Our teacher programmes help educators around Aotearoa, New Zealand and abroad to create collaborative, equitable teaching and learning practices that ignite digital change and transformation within communities.

We recognise many passionate and dedicated teachers have incredible ideas that are waiting for the opportunity to become reality. Using our postgraduate teacher programmes as their platform, new classroom practices, whole school pedagogies and entire community projects have been made possible by graduates of The Mind Lab.



The Mind Lab

Our leadership programmes support people to lead change, whether that's from the front, or from within. Transformational leadership is two-fold, first to recognise one's own leadership capabilities and then to foster leadership capabilities within others. Our approach to leadership is underpinned by the simple practice of 'for good'. By building an holistic mindset that encourages collaboration and inclusivity, graduates of The Mind Lab leadership programmes have made positive impacts on their organisations and communities, and grown as capable future-fit leaders in themselves.

At The Mind Lab, we've always believed that times of massive transformation offer the opportunity to be a leader of change for good. As a faculty of academyEX, we continue to shape today's leaders into leaders for tomorrow.



[Student story]

Satchet Singh

**Postgraduate Certificate
in Digital and Collaborative
Learning**

Satchet Singh decided to do the Postgraduate Certificate in Digital and Collaborative Learning while leading the technology department at Papakura High School in Auckland. Through the programme he developed new approaches to inspiring tamariki and the wider community, to have a go with digital technologies.

“Something that surprised me with The Mind Lab was the opportunities to have a go, hands-on. 70% of learning takes place by doing, which we did with simple things like animation on the phone and Makey-Makeys. Playing with those and collaborating with other teachers was something I was able to bring back to the classroom at Papakura High School.”

Satchet also started a Coding Club after school hours and his experience with The Mind Lab helped him to create a safe, inviting space for his Coding Club students.

The Club began in July 2020 and continues today as a place the whole community can come to and learn basic coding skills. When Satchet established the Coding Club, he offered kai (food) for students to enjoy before class as a way to connect with kaupapa Māori principles he learnt on the Digital and Collaborative Learning programme.

“It’s always about teaching students what it means for them. To give them the onus and self-efficacy to believe in themselves and have agency and autonomy to take responsibility for their own learning.”

Satchet’s Coding Club helped open up the world of coding to many people who hadn’t had the chance or had felt shut out previously because of their gender or age.

Learning with The Mind Lab enriched Satchet’s teaching and his inspiration continues to ripple out to the students he teaches.

“

The DCL gave me the autonomy to have a growth mindset, to use ongoing learning and reflection; how can I improve, how can I do better, how can I share information? It was fantastic to share that with like-minded people who are also passionate.

Satchet Singh

”



[Student story]

Rachel Wells

**Postgraduate Certificate in
Leading Change for Good**

Rachel Wells found the Leading Change for Good postgraduate certificate at The Mind Lab after searching for something different.

“I wanted something that was purposeful and embraced how I learned.”

As Head of Culture and Transformation at Lyttelton Port, Rachel used the programme to develop a strategy on how to lead change for good through cultural transformation. Her thinking now underpins the transformation projects she’s leading, informing an inclusive ‘design-through-collaboration’ approach.

“That goes to the heart of leading change for good, that change needs to be a movement not a mandate.”

She’s getting real results.

“I said to my team, ‘right, we’re doing things differently. We are not going to do the traditional thing and develop a programme, launch it into the business and then go hmm, why’d that fail?’ So far we’ve had amazing participation and engagement across the organisation. I’ve had people come to me and say ‘wow, I’ve never had anyone listen to me like that before’. I’ve had senior leadership say ‘that was incredible!’. It’s been enlightening.”

Rachel has studied before but this time around she’s developed contemporary skills that are critical to leading change in today’s organisations.

“Some content was familiar, but there were things that I would never have considered around indigenous leadership, the whole concept of the Social Enterprise and how, as human beings, we can have a positive or negative impact.”

Not one to sit still, Rachel has decided to stack her learning and do the Master of Change and Organisational Resilience with The Mind Lab in 2023.

“

Leading Change for Good gave me confidence to push for what I know is the right thing to do; involving people, respecting all the people who work in an organisation, no matter what their role is. I have seen so much turn around by taking an inclusive and respectful approach.

Rachel Wells

”



Dates

Intakes in February
& August 2023.

—



Duration

15 weeks, part-time.

—



Study mode

100% self paced online learning.

—



Location

Wherever you are.

—



Outcome

Level 8 (15 credits) NZQA
micro-credential.

[DCTL]

Micro-credential in Digital & Collaborative Teaching & Learning

Innovate your teaching practice for today's world.

Gain the perfect combination of pedagogical foundations and innovative approaches to teaching and learning. Through self-paced learning, you'll get an opportunity to develop the knowledge, awareness, and capability to confidently apply digital tools, collaborative approaches and sustainability to teaching and learning in your professional practice.

Topics covered

- Computational thinking and coding.
- Games and gamification.
- Sustainability and citizen science in learning.
- Learning networks.
- Blended and online learning.
- Collaboration.
- Digital responsibility and citizenship.

What you'll walk away with

- An ability to critically reflect on contemporary pedagogies and digital and collaborative learning in educational contexts.
- Skills to integrate contemporary and emergent digital tools into innovative educational practice.
- Capability to develop and apply collaborative teaching and learning practices in an educational context.
- Knowledge to develop education practice in the context of cultural and environmental sustainability.

Entry requirements

To enrol in this micro-credential, you need to have:

- A bachelor's degree or an equivalent level qualification; **or**
- Equivalent professional experience of working in education demonstrated with evidence.

Find out how to demonstrate equivalent professional experience under [How to apply](#).

“

I had a lightbulb moment that's now made learning work for all my students, even those with shorter attention spans. I'm creating videos with all the (boring!) info to watch before class. Then they come armed with questions. It's fast tracking our experience and their thinking because they're using digital as their springboard!

Claire Funk, Micro-credential in Digital and Collaborative Teaching and Learning graduate.

”

Apply here for DCTL

Intake dates for 2023 February & August

See [Key dates](#) for application deadlines

Programme delivery

Duration: 15 weeks, part-time

Weekly commitment: 2 hrs per week directed learning via supplied materials and activities on the learning platform; 8 hrs self-directed learning per week (incl. further reading, self-sourced materials, assessment work and applying your learning into practice).

Study mode: 100% online learning, self paced.

Additional support: 5 optional online sessions via Zoom on during weeks 1, 3, 6, 10 and 14 of the course.

More detailed information about session times is provided in the [Key information pack](#).

Assessments: applied learning

Two summative assessments.

Throughout the micro-credential you will apply your learning through applied assessments and receive feedback from facilitators. These are valuable opportunities to reflect on your own context and understand your current education-related practice in light of new learning theories, frameworks and the demands of the changing world. You will be supported with weekly learning activities that are designed to help you work toward your assessments.

More detailed information about assessment is provided in the [Key information pack](#).

Fees

Domestic students: NZ \$450 (incl. GST).

International students: Fees vary depending on your location – refer to the [International students](#) section for programme fees.

Domestic or international student? [Find out here](#).

Sampler & Advancer

This micro-credential is also available as a Sampler or Advancer short course. Read more about what a Sampler and Advancer short course is [here](#).

See the free [Sampler short course](#) on our website.

See the [Advancer short course](#) on our website.



Dates

Intakes in February, May,
July & October 2023.

—



Duration

7 weeks, part-time.

—



Study mode

100% self paced online learning.

—



Location

Wherever you are.

—



Outcome

Level 7 (15 credits) NZQA
micro-credential.

[DSW]

Micro-credential in Digital Skills for the Workplace

Learn 21st Century skills in a digital environment.

Practical Assessments: applied learning to upskill your digital know-how and build online confidence to set up, manage and leverage digital tools in your workplace for better efficiency and productivity.

Topics covered

- Innovation and ideation.
- Project management.
- Online security and privacy.
- Digital marketing, design and content development.
- User experience and web presence.

What you'll walk away with

- The ability to critically analyse digital tools used and emerging in the workplace in the context of work and community challenges.
- Awareness of personal, professional and collective skills gaps in the context of the digitally-enabled workplace.
- Tools to develop advanced digital skills and knowledge across a range of digital solutions for use in contemporary work environments.

Entry requirements

To enrol in this micro-credential, you need to have:

- A level 6 qualification or higher; **or**
- Equivalent professional experience demonstrated with evidence.

Find out how to demonstrate equivalent professional experience under [How to apply](#).

“

The Digital Skills course really helped my confidence. When helpful and supportive people are there and willing to help you learn, why not?! Just take the plunge, give the course a go.

Samantha, Micro-credential in Digital Skills for the Workplace graduate.

”

Apply here for DSW

Intake dates for 2023 February, May, July & October

See [Key dates](#) for application deadlines

Programme delivery

Duration: 7 weeks, part-time.

Weekly commitment: 2 hrs per week of scheduled live facilitated online sessions; 2 hrs per week directed learning via supplied materials and activities on the learning platform; 8 hrs self-directed learning per week (incl. further reading, self-sourced materials, assessment work and applying your learning into practice).

Study mode: 100% online learning, self paced.

More detailed information about session times is provided in the [Key information pack](#).

Assessments: applied learning

Throughout the micro-credential in Digital Skills for the Workplace you will apply your learning through formative and summative assessment and receive feedback from facilitators. There are two assessments in this micro-credential. These are valuable opportunities to reflect on your own context by identifying a change you are facing and design a plan to meet the challenge with the support of digital skills and tools. You will be supported with weekly learning activities that are designed to help you work toward your assessments.

More detailed information about assessment is provided in the [Key information pack](#).

Fees

Domestic students: The DSW micro-credential is being offered with a 100% full fees scholarship in 2023.

International students: Fees vary depending on your location – refer to the [International students](#) section for programme fees.

Domestic or international student? [Find out here](#).

Find out more about [Scholarships & funding options](#).

Sampler short course

This micro-credential is also available as a Sampler course. Read more about what a Sampler short course is [here](#).

See the free [Sampler short course](#) on our website.



Dates

Intakes in March
& August 2023.



Duration

37 weeks, part-time.



Study mode

Blended (live online sessions and
two full day in-person sessions).



Location

Wherever you are + in-person
sessions at academyEX HQ
99 Khyber Pass Rd, Grafton Auckland.



Outcome

Level 8 (60 credits) NZQA
postgraduate certificate.

[PGC-DCL]

Postgraduate Certificate in Digital & Collaborative Learning

A collaborative and practical programme for teachers.

An innovative and future-focused professional development programme relevant to all educators seeking to bring contemporary skills and tools to their learning environments. Over 37 weeks, build knowledge of contemporary education practices, evaluate personal teaching environments and integrate relevant technologies and methodologies into classrooms through applied practice.

Topics covered

- Contemporary approaches to teaching and learning.
- Culturally intelligent approaches to classroom innovation.
- Collaborative learning.
- Integrating digital technologies into the curriculum.
- Approaches to leadership and followership in education.

What you'll walk away with

- Know how to find, access and engage with contemporary literature and research to advance your specialised knowledge and keep you professionally current in your practice.
- An ability to use self-reflection in your practice and see your own potential to influence applied professional practice.
- Communication skills that improve outcomes when working with a diverse range of people, cultures and in changing environments.
- Capability to research, investigate and critique digital pedagogy leadership and influences in contemporary learning environments.
- Be able to identify, explore and develop a critical approach to research with specific focus on cognitive development and instructional theory.



All children have an innate potential, and it's up to us as teachers to unlock that potential, whatever that may be.

Rāhera Kuka, Postgraduate Certificate in Digital and Collaborative Learning graduate.



Apply here for PGC-DCL

**Intake dates for 2023
March & August**

See [Key dates](#) for application deadlines

Entry requirements

To be admitted to this postgraduate certificate, you need to have:

- A bachelor's degree (or level 7 graduate diploma) in education or similar discipline; **or**
- Provide documented evidence of outcomes in an education work environment to demonstrate an ability to perform in the programme and commit to achieving its outcomes.

Find out how to demonstrate equivalent professional experience under [How to apply](#).

Special admission – you may be considered if you have:

- An undergraduate degree (or a level 7 graduate diploma) in an unrelated discipline, or competencies equivalent to a bachelor's level graduate, and have a minimum of two years' related work experience that is relevant to the aims of PGC-DCL; **or**
- A graduate diploma qualification in education or similar discipline and a minimum of two years' appropriate work experience.

Attendance expectations

Attendance is an important component of student success and we strongly recommend that students attend a minimum of 80% of all scheduled sessions.

Programme structure

Students are enrolled in two courses over the duration of the programme. The first course, Digital and Collaborative Transformation in Learning and Leadership, is a pre-requisite for the second, and students must successfully complete this course to progress into Leading Research Informed Innovation in Practice.

DCLC8001	Level 8	30 Credits
Digital and Collaborative Transformation in Learning and Leadership		
DCLC8002	Level 8	30 Credits
Leading Research Informed Innovation in Practice		

Programme delivery

Duration: 37 weeks, part-time.

Weekly commitment: 1.5 hr weekly online class session (two time slots available to provide flexibility); plus 6-8 hrs of hands-on assessments: applied learning in your classroom and preparation and collaboration work.

Block sessions: 2 x full day in-person block sessions. See the [Key information pack](#) for all specific dates and times by intake. If travel is an obstacle, you can join the online option instead. Online block sessions are spread over two days for optimal learning.

Study mode: Blended (live online sessions and two full day in-person sessions).

Location: 2 x block sessions held at academyEX HQ, 99 Khyber Pass Rd, Grafton, Auckland (option to join virtually).

(Continued over page...)



Apply here for PGC-DCL

Intake dates for 2023 March & August

See [Key dates](#) for application deadlines

Programme delivery (con't)

Why attend a block session in person?

If you're able, we strongly encourage you to come to both full day workshops in-person at academyEX HQ in Grafton Auckland. It's an incredible opportunity to make those lasting connections with your cohort and collaborate together for broader ideas and understanding that can add immeasurable value to your learning.

Assessments: applied learning

Apply your learning and receive feedback through four summative assessments across the programme that enable you to reflect on your practice and develop evidence-based digital and collaborative innovations to implement and evaluate. Assessments are collaborative and individual and can be presented in written and video format.

More detailed information about assessment is provided in the [Key information pack](#).

Fees

Domestic students: NZ \$3,320 (incl. GST).
10% Early Bird Saving and scholarships available.

International students: Fees vary across programmes. See the [International students](#) section. 10% Early Bird Saving available.

Domestic or international student? [Find out here](#).

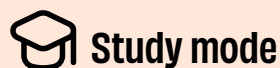
Find out more about [Scholarships & funding options](#).



Dates
Intakes in January
& July 2023.



Duration
1-2 years (incl. PGC-DCL), full-time.
2-3 years (incl. PGC-DCL), part-time.



Study mode
Blended (live online sessions and four
full day in-person sessions per year)
or 100% online.



Location
Wherever you are + in-person
sessions at academyEX HQ,
99 Khyber Pass Rd, Grafton Auckland.



Outcome
Level 9 (180 credits) NZQA
master's degree.

[MCE]

Master of Contemporary Education

A practice-based masters focused on real change in your education community.

A practice-based masters programme for education leaders – research and theory based learning culminating in the development and execution of a Change Project in your school or community.

You will be able to lead educational innovation and opportunities created through digital technologies and future-focused practices to advance education. You will work collaboratively with students, parents, whānau, communities, and other key stakeholders in a range of contexts to develop and adapt strategies to advance teaching practice and improve learner outcomes.

Topics covered

- Leadership in Practice.
- Collaboration in Practice.
- Contemporary Teaching.
- Digital Fluency.
- Practice based change research – including the development of a plan and implementation of a project.

What you'll walk away with

- Skills to critically engage in a substantial and authentic way with students, whānau, communities and other key stakeholders invested in educational change.
- An ability to critique past, existing, and emerging practices and determine your own cultural and social impact in the wider education context.
- Tools to critically analyse existing and emerging opportunities in contemporary education, and generate strategies to advance your own and the wider teaching practice.
- Capability to develop and adapt specialised knowledge in emerging and disruptive technologies, and support digital fluency in your practice.
- Knowledge to lead and develop collaborative learner-focused 'solutions in practice' in the context of emerging challenges and opportunities in contemporary education.

Apply here for MCE

Masters programme structure	Part 1: Digital and Collaborative Learning	DCLC8001	Transformation in Learning and Leadership	Level 8	30 Credits
		DCLC8002	Leading Research Informed Innovation in Practice	Level 8	30 Credits
	Part 2: Contemporary Education	MLED8201	Contemporary Teaching	Level 8	15 Credits
		MLED8202	Digital Fluency	Level 8	15 Credits
		MLED8203	Leadership in Practice	Level 8	15 Credits
		MLED8204	Collaboration in Practice	Level 8	15 Credits
	Part 3: Practice-based Change Project	MLED9200	Practice-based Change Project	Level 9	45 Credits

Entry requirements

To be admitted to this master's degree you need to have:

- A recognised bachelor's degree in the same or similar discipline (education), with merit achievements, deemed to be an average grade of B- or higher in all Level 7 courses, **or**
- A professional qualification in a relevant discipline, recognised as being equivalent to merit achievement in a bachelor degree or equivalent.
- Special Admission is possible, please [contact us](#) for further information and to discuss eligibility.

Find out how to demonstrate equivalent professional experience under [How to apply](#).

Getting to know you and your goals:

For admission into this master's programme you will have an interview with one of the programme team. It's a chance for you to ask any questions and ensure that this master's programme is the right fit for you. You can discuss your professional experience, the support available from our team and the commitment

you can give to achieving your learning goals.

We do seek the following from all learners:

- A willingness to commit to the programme;
- Evidence of competency in achievement, leadership, humility, respect and empathy, self-reflection, and commitment to the vision of the programme.

Attendance expectations

Attendance is an important component of student success and we strongly recommend that students maintain a minimum of 80% attendance online and in-person sessions.

Programme structure

There are three parts to this master's degree.

Part 1: Digital and Collaborative Learning (60 credits, Level 8)

The first part of the programme is the two courses of the [Postgraduate Certificate in Digital and Collaborative Learning \(PGC-DCL\)](#).

Part 2: Contemporary Education (60 credits, Level 8)

Part 2 is made up of four 15-credit courses; these build on the learning and competencies acquired in Part 1. You will work together to further develop digital, collaborative, and leadership competencies, which inform their learning, thinking, and application of knowledge to practice. The four courses focus on challenges in contemporary teaching, digital fluency, and leadership and collaboration in practice.

Part 3: Practice-based Change Project (60 credits, Level 9)

The Practice-based Change Project is a capstone course that builds on the outcomes of Part 1 and 2. In this final 60-credit course students demonstrate their capability in leadership and collaboration towards positive change through the implementation of a Practice-based Change Project. You will lead a project and work collaboratively with other learners to support, mentor, and coach them in their projects. You will present their project to their peers and other stakeholders at the end of Part 3 at the MCE Symposium.

“

The Master of Contemporary Education opened my eyes up to the possibility that we have as teachers. I've been teaching for 20 years and this programme has really changed the way that I think about the power of influence that I have within my classroom and the way that I can affect the kids and their learning journeys. It was powerful.

Stephanie Ngarepa, Master of Contemporary Education graduate.

”

Programme delivery

Duration: The masters can take 2-3 years to complete with Part 1 taking 37 weeks, part-time and the remaining Parts 2 and 3 each taking 1 year. In full-time study, Parts 2 and 3 can be completed in 1 year.

Weekly commitment: **Part 1:** 1.5hrs weekly online class session + 6-8hrs Assessments: applied learning – see PGC-DCL; **Part 2:** 1.5 hrs fortnightly facilitated online sessions plus 10-15 hrs per week over 1 year or 25 hrs per week over 6 months (if full-time); **Part 3:** 12-15 hrs per week over 1 year (part-time) or 25-30 hrs per week over 6 months (full-time).

Study mode: Blended (live online sessions and in-person sessions 4 times per year during the school holidays) or 100% online (all learning including in-person sessions can be accessed online).

Location: In-person sessions at academyEX HQ, (option to join virtually).

Orientation: 1 x full day in-person session at academyEX in Grafton at the start of Part 2. Whether studying in Blended or 100% Online mode, we encourage all learners to attend this orientation in-person. It is a fantastic way to

connect and dedicate time to building those important relationships with your cohort and the teaching team who will support you through your master's journey.

Additional support: Throughout your master's journey, we have optional weekly online support sessions; ManaakiFono and Mahi Tahi to support collaboration and connection. In Part 3 you will attend supervision sessions at least once every 2 weeks in addition to meeting with your project team

Full time option criteria: The full-time study option is only available to students who have been granted study leave and can expect to study a minimum of 25 to 30 hrs per week.

See [Key information pack](#) for all specific dates and times.

Assessments: applied learning

Apply your learning through critical evaluation of education pedagogy, leadership, culturally responsive practice, and the development of a teaching implementation plan. During Part 2, you will develop an ePortfolio to consolidate your learning and a project proposal for a your practice-based change project to

be implemented in Part 3.

More detailed information about assessment is provided in the [Key information pack](#).

Fees

Domestic students: NZ \$12,060 (incl. GST) – for full programme.

NZ \$8,738 (incl. GST) – for Part 2 & 3 only (applies if the Postgraduate Certificate in Digital and Collaborative Learning has been completed). 10% Early Bird Saving and scholarships available.

International students: Fees vary across programmes. See the [International students](#) section. 10% Early Bird Saving available.

Domestic or international student? [Find out here](#).

Find out more about [Scholarships & funding options](#).

Apply here for MCE

Intake dates for 2023 January & July

See [Key dates](#) for application deadlines



Dates

Intakes in February,
May & August 2023.



Duration

34 weeks, part-time.



Study mode

Blended (live online sessions and
seven full day in-person sessions)



Location

Wherever you are + in-person
sessions at academyEX HQ,
99 Khyber Pass Rd, Grafton Auckland.



Outcome

Level 8 (60 credits) NZQA
postgraduate certificate.

[PGC-LCG]

Postgraduate Certificate in Leading Change for Good

Create positive change where it matters to you.

A practice-based postgraduate programme designed to support the professional development and needs of leaders in a rapidly changing industry. Across 34 weeks, build new knowledge and understanding of leadership, technology, sustainability and change, and develop and justify strategies to address real world leadership and sustainability challenges in the context of change in their practice.

Topics covered

- Contemporary leadership models.
- Culturally sustaining and purpose driven leadership leadership.
- Authentic value.
- New and emerging business models and technology for good.
- Systems thinking and design thinking.
- Impact measurement and strategy.

What you'll walk away with

- Ability to identify and adapt new and emerging business models committed to prioritising purpose over profit to generate authentic value for community benefit.
- Skills to evaluate and apply contemporary leadership approaches to drive change for positive impact on communities, organisations and businesses.
- Ability to evaluate and address an individual's and organisation's capability to collectively lead sustainable change.
- Ability to develop, justify, and apply strategies to lead sustainable solutions for people and places in the context of changing social, economic, political, and cultural environment.

“

You feel like you are part of a movement. You will not find this course in any standard university.

Rebecca Gaelic, Postgraduate Certificate in Leading Change for Good graduate.

”

Apply here for PGC-LCG

**Intake dates for 2023
February, May & August**

See [Key dates](#) for application deadlines

Entry requirements

To be admitted to this postgraduate certificate, you need to have:

- A recognised bachelor's degree or equivalent professional qualification or higher AND a minimum of two years relevant industry experience; **or**
- At least four years' professional experience in a relevant industry or community demonstrating equivalence or higher to the qualification stated above.

Find out how to demonstrate equivalent professional experience under [How to apply](#).

For admission into the programme all applicants are required to submit a brief Statement of Intent (there is a template for this provided during the application process). The Statement of Intent is used to ensure applicants understand the programme, and to allow academyEX to help ensure the programme is a good fit for the student. In addition and at the discretion of the admission/selection panel, interviews may be required.

Attendance expectations

Attendance is an important component of student success and we strongly recommend that students attend a minimum of 80% of all scheduled sessions.

Programme structure

Students are enrolled in two courses over the duration of the programme. The first course, LEAD8001 is a prerequisite for the second, and students must successfully complete this course to progress into LEAD8002.

LEAD8001	Level 8	30 Credits
A Community of Leaders: Driving Change for Good		
LEAD8002	Level 8	30 Credits
Values, Aspirations and Actions: Enabling Sustainable Impact and Change		

Programme delivery

Duration: 34 weeks, part-time.

Weekly commitment: 2 hr weekly online class session, and hands-on learning in your chosen environment plus additional preparation and collaboration work outside of this (roughly 14 hrs per week combined).

Block sessions: 7 x full day in-person block sessions. See [Key information pack](#) for all specific dates and times by intake. We encourage attendance in person, however, if travel is an obstacle, you can join online.

Study mode: Blended (live online sessions and 7 x full day block sessions)

Location: In-person sessions at academyEX HQ, 99 Khyber Pass Rd, Grafton, Auckland (option to join virtually).

(Continued over page...)



Apply here for PGC-LCG

**Intake dates For 2023
February, May & August**

See [Key dates](#) for application deadlines

Programme delivery (con't)

Why attend a block session in person?

If you're able, we strongly encourage you to come to both full day block sessions in person at academyEX HQ in Grafton, Auckland. It's an incredible opportunity to make those lasting connections with your cohort and collaborate together for broader ideas and understanding that can add immeasurable value to your learning.

Assessments: applied learning

Apply your learning and receive feedback through assessments that enable you to reflect on your leadership practice, work collaboratively to facilitate debate and learning and contribute to solving real world challenges with organisations, before developing a change strategy to address an opportunity or challenge in your practice. Assessments are collaborative and individual and can be presented in written and video format.

More detailed information about assessment is provided in the [Key information pack](#).

Fees

Domestic students: NZ \$3,310 (incl. GST).
10% Early Bird Saving and scholarships available.

International students: Fees vary across programmes. See the [International students](#) section. 10% Early Bird Saving available.

Domestic or international student? [Find out here](#).

Find out more about [Scholarships & funding options](#).

Dates

Intakes in February, June
& October 2023.

Duration

13 months, full-time.
19 months, part-time.

Study mode

Blended (live online sessions and
ten full day in-person sessions).

Location

Wherever you are + in-person
sessions at academyEX HQ,
99 Khyber Pass Rd, Grafton Auckland

Outcome

Level 9 (180 credits) NZQA
master's degree.

[MCOR]

Master of Change & Organisational Resilience

Build organisational resilience that not only withstands disruptions, but grows because of them.

Leading change for resilience requires a mindset shift to one that is adaptable, flexible and poised for the opportunities of change. In this programme, you'll develop skills that foster collaborative working relationships, which support adaptability. You will also apply future-focused resilience frameworks to real problems in your professional environment, while considering the impact on people, place and planet.

Topics covered

- Technology and ethics.
- Te Tiriti o Waitangi and culturally intelligent practice.
- Change leadership and management.
- Reflective practice.
- Leadership models .
- Research methods and stakeholder engagement.

What you'll walk away with

- Skills to analyse critical social, cultural, economic, environmental and technological drivers of change that impact organisations.
- Ability to evaluate Indigenous and contemporary practices that can support effective and authentic initiatives to build organisational resilience in the context of change.
- Reflections on personal and collective capability to lead sustainable change in practice.
- Ability to apply culturally intelligent practice founded on principles of Te Tiriti o Waitangi to develop equitable and inclusive outcomes of change initiatives.
- Tools to develop culturally, methodologically and ethically sound organisational change initiatives to advance authentic leadership and management practice.
- Ability to apply relevant knowledge, skills and capabilities to develop change initiatives focused on organisational resilience in the context of local and global disruption. (Continued over page...)

Apply here for MCOR

Masters programme structure	Part 1: Discovery	MCOR8101	Technology, Ethics and Change	Level 8	15 Credits
		MCOR8102	Organisational Complexity, Change and Resilience	Level 8	15 Credits
		MCOR8103	People and Capability Through Organisational Change	Level 8	15 Credits
		MCOR8104	Leadership, Culture and Change	Level 8	15 Credits
	Part 2: Project Planning	MCOR8205	Applied Research Methods, Stakeholder Engagement, and Ethics	Level 8	15 Credits
		MCOR8206	Practice-based Change Research Proposal	Level 8	15 Credits
	Part 3: Project Implementation	MCOR9345	Practice-based Change Strategy	Level 9	45 Credits
		MCOR9390	Practice-based Change Research Project	Level 9	90 Credits

What you'll walk away with (con't)

AND for 90 credits at Level 9;

- Ability to develop and apply new knowledge contributing to professional understandings of the complexity of leading transformational change in organisations.

Entry requirements

To be admitted to this master's degree you need to have:

- A recognised bachelor's degree or Level 7 graduate diploma (or higher) AND a minimum of two years relevant industry experience; **or**
- At least 5 years professional experience in a relevant industry or community demonstrating through evidence equivalence or higher to the qualification stated above.

Find out how to demonstrate equivalent professional experience under [How to apply](#).

Getting to know you and your goals:

For admission into this master's programme you will have an interview with one of the programme team. It's a chance for you to ask any questions and ensure that this master's programme is the right fit for you. You can discuss your professional experience, the support available from our team and the commitment you can give to achieving your learning goals.

We do seek the following from all learners:

- A willingness to commit to the programme;
- Evidence of competency in achievement, leadership, humility, respect and empathy, self-reflection, and commitment to the vision of the programme.

Attendance expectations

Attendance is an important component of student success and we strongly recommend that students maintain a minimum of 80% attendance online and in-person sessions.

Programme structure

This 180-credit MCOR programme is structured into three parts, and there are a number of pathways that can be taken to complete the programme.

Part 1: Discovery

Focuses on discovery, evaluation and reflection.

Part 2: Project Planning

Focuses on contextualisation of advanced knowledge and skills by planning a practice based change project.

Part 3: Project Implementation

Focuses on application, action and evaluating the impact of learning and their context.

If following the core MCOR pathway, the courses above are relevant.

The award of credits from some postgraduate certificates and micro-credentials can also be included in this masters. See the [Key information pack](#) for more details about different pathways.

“

I see a need for employees to feel a sense of belonging, to be valued and respected, no matter their role, tenure or experience. There's also a need for organisations to respond proactively to change. These two needs can be met through adaptive and highly responsive leadership, where leaders encourage integrated and equitable systems, structures and processes.

Dr Allanah Johnston, Programme Lead for Master of Change and Organisational Resilience.

”

Programme delivery

Duration: 13 months full-time, or 19 months part-time.

Weekly commitment: The programme is offered in a blended model consisting of weekly online sessions (Part 1 and 2 only) supplemented by in-person block sessions every four to six weeks.

Study mode: Blended (live online sessions and full-day in-person sessions every 4-6 weeks) or 100% online (all learning including in-person sessions can be accessed online).

Location: In-person sessions at academyEX HQ, (option to join virtually).

Orientation: 1 x full day in-person session at academyEX in Grafton at the start of Part 1 and 2. Whether studying in Blended or 100% online mode, we encourage all learners to attend this orientation in-person. It is a fantastic way to connect and dedicate time to building those important relationships with your cohort and the teaching team who will support you through your master's journey.

Additional support: Throughout your master's journey, we will have optional weekly online support sessions to foster collaboration and connection. In Part 3 you will attend supervision sessions at least once every 2 weeks with your dedicated advisor.

Full time option criteria: Part 3 of this master's programme can be studied full time across 20 weeks. The full time workload is 40 hrs per week, and we recommend speaking with the team to discuss full-time study alongside your other commitments.

See [Key information pack](#) for all specific dates and times.

Assessments: applied learning

Assessments in this programme have been designed to support the learning process. There is no formal thesis in the programme. Apply your learning through collaborative and individual formative and summative assessments to develop a leadership portfolio, case study review, project proposal and project outputs of value to you, your organisation or community.

More detailed information about assessment is provided in the [Key information pack](#).

Apply here for MCOR

Intake dates for 2023 February, June & October

See [Key dates](#) for application deadlines

Fees

Domestic students: Full programme up to NZ \$12,999 (incl. GST), depending on chosen pathway. 10% Early Bird Saving and scholarships available.

International students: Fees vary depending on your location – refer to the [International students](#) section for programme fees. 10% Early Bird Saving available.

Domestic or international student? [Find out here](#).

Find out more about [Scholarships & funding options](#).

Key dates for The Mind Lab

Micro-credential in Digital Skills for the Workplace	Programme Intake	Scholarship (Domestic) Application Close Date	Application Close Date	Start Date	End Date	
	February 2023	N/A	14 Feb 2023	21 Feb 2023	10 Apr 2023	
	May 2023	N/A	2 May 2023	9 May 2023	26 Jun 2023	
	July 2023	N/A	18 Jul 2023	25 Jul 2023	11 Sep 2023	
	October 2023	N/A	10 Oct 2023	17 Oct 2023	04 Dec 2023	
Micro-credential in Digital & Collaborative Teaching & Learning	Programme Intake	Scholarship (Domestic) Application Close Date	Application Close Date	Start Date	End Date	
	February 2023	N/A	13 Feb 2023	20 Feb 2023	4 Jun 2023	
	August 2023	N/A	31 Jul 2023	7 Aug 2023	20 Nov 2023	
Postgraduate Certificate in Digital & Collaborative Learning	Programme Intake	Scholarship + Early Bird Saving Application Close Date (Domestic)	Early Bird Saving Application Close Date (International)	Applications Close	Start Date	End Date
	March 2023	6 Feb 2023	9 Jan 2023	27 Feb 2023	6 Mar 2023	19 Nov 2023
	August 2023	17 Jul 2023	19 Jun 2023	7 Aug 2023	14 Aug 2023	28 Apr 2024
Master of Contemporary Education	Programme Intake	Scholarship + Early Bird Saving Application Close Date (Domestic)	Early Bird Saving Application Close Date (International)	Applications Close	Start Date	End Date
	January 2023 Full-time	19 Dec 2022	21 Nov 2022	12 Jan 2023	16 Jan 2023	14 Jan 2024
	January 2023 Part-time	19 Dec 2022	21 Nov 2022	12 Jan 2023	16 Jan 2023	12 Jan 2025
	July 2023 Full-time	19 Jun 2023	22 May 2023	3 Jul 2023	17 Jul 2023	14 Jul 2024
	July 2023 Part-time	19 Jun 2023	22 May 2023	3 Jul 2023	17 Jul 2023	13 Jul 2025

Postgraduate Certificate in Leading Change for Good	Programme Intake	Scholarship + Early Bird Saving Application Close Date (Domestic)	Early Bird Saving Application Close Date (International)	Applications Close	Start Date	End Date
	February 2023	19 Jan 2023	22 Dec 2022	9 Feb 2023	16 Feb 2023	11 Oct 2023
	May 2023	15 May 2023	1 May 2023	15 May 2023	29 May 2023	13 Feb 2024
	August 2023	26 Jul 2023	28 Jun 2023	16 Aug 2023	22 Aug 2023	7 May 2024
Master of Change & Organisational Resilience	Programme Intake	Scholarship + Early Bird Saving Application Close Date (Domestic)	Early Bird Saving Application Close Date (International)	Applications Close	Start Date	End Date
	February 2023 Part 1 : Full-time	16 Jan 2023	19 Dec 2023	30 Jan 2023	13 Feb 2023	31 Mar 2024
	February 2023 Part 1 : Part-time	16 Jan 2023	19 Dec 2023	30 Jan 2023	13 Feb 2023	25 Aug 2024
	February 2023 Part 2 : Full-time	16 Jan 2023	19 Dec 2023	30 Jan 2023	13 Feb 2023	8 Oct 2023
	February 2023 Part 2 : Part-time	16 Jan 2023	19 Dec 2023	30 Jan 2023	13 Feb 2023	24 Mar 2024
	June 2023 Part 1 : Full-time	15 May 2023	17 Apr 2023	29 May 2023	12 Jun 2023	28 Jul 2024
	June 2023 Part 1 : Part-time	15 May 2023	17 Apr 2023	29 May 2023	12 Jun 2023	15 Dec 2024
	October 2023 Part 1 : Full-time	11 Sep 2023	14 Aug 2023	25 Sep 2023	9 Oct 2023	24 Nov 2024
	October 2023 Part 1 : Part-time	11 Sep 2023	14 Aug 2023	25 Sep 2023	9 Oct 2023	11 May 2025

Early Bird Saving ends and scholarship applications close for domestic applications 4 weeks before the intake start date / Early Bird Saving ends for international applications 8 weeks before the intake start date
Applications close for micro-credentials and postgraduate certificates close 1 week before the intake start date / Applications close for master's programmes 2 weeks before the intake start date



Tech Futures Lab

For professionals to stay relevant, informed and capable of navigating the changing world of work, continuous learning is essential.

Professional development for the edge you need to innovate, transform and disrupt the status quo in businesses or across industry

Since 2016, we've supported executives, entrepreneurs, creative thinkers and community leaders to create future-fit solutions that leverage our collective technological future. Embracing digital transformation is critical if we want to not only be part of the conversation, but lead it and influence the direction that emerging disruptive technologies, like AI, big data, automation and IoT, can steer our world toward.

Our technology programmes are strategic capability builders, ideal for anyone who wants to gain in-depth contemporary insights, develop a deeper understanding of the levers of change and become a confident navigator in a world that's constantly evolving.

Busy professionals need practical skills, knowledge and a launch pad to lift ideas into reality. That's why learners on our programmes walk away with strategic, actionable, business-context projects they can take back into their organisation to enact change.

Likewise, budding entrepreneurs and changemakers have used our disruptive technology qualifications to found new businesses, using contemporary models, like the sharing or circular economy. Graduates of Tech Futures Lab are pioneers and innovators who have gone on to create enterprises that completely change the way business operates, contributes and engages with society.

At Tech Futures Lab we help people build skills, knowledge and networks that create opportunities for new; whether that's a new career, a new business or new thinking that adds to collective knowledge needed to make the most of this digital age.





[Student story]

Carmen Blackler

Master of Technological Futures

Carmen Blackler came to Tech Futures Lab to become a Master of Technological Futures because she had reached a point in her career where she felt like technology wasn't being used to its full potential.

“Being an engineer, I like to know how things work. So, I thought that to help my clients, I'd go and upskill to understand what technology was available and how we might apply it to the sector.”

Running her own consultancy practice, Blackyard Consulting, Carmen was drawn to the programme to solve issues in the energy sector. But, as the programme often does, it pulled her towards a more entrepreneurial pathway.

Based in Wānaka, Carmen could see how difficult it was for seasonal workers to find temporary accommodation. So she founded the Workforce Accommodation Network (The WAN), a platform that connected workers to people with spare rooms.

It proved to Carmen that to be an innovator, you don't need to invent new technology.

“Technology isn't just about widgets or smart, cool, new things – it's also about processes and how you apply technology to things. You don't have to be a genius.”

Put simply, the Master of Technological Futures is about identifying a problem and finding a way to solve it. For Carmen, it gave her the skills and conviction to turn her vision for solutions into something tangible. And while the WAN has been put on hold, the learning and overall experience has strengthened Carmen's resolve to help clients “to solve today's problems for a better tomorrow.”

“

The masters was life-changing. You're given the opportunity to think more broadly and challenge the status quo, and ask 'If I could do anything what would I do?' Which is something that as business people, we don't do enough of.

Carmen Blackler

”



[Student story]

Ian Scott

**Postgraduate Certificate
in Human Potential for the
Digital Economy**

Ian Scott used the Human Potential for the Digital Economy postgraduate certificate to extend his knowledge of what potential looks like in an era where how we live and work is changing significantly.

“Technology is impacting and disrupting my sector, as with most others, and I want to be a leader in that process, supporting my clients, my team and my employer to benefit from the disruption.”

As GM of Client Solutions at Randstad, a job and recruitment agency, Ian spends his days creating pathways for people to reach their full potential. He used the programme to focus on how artificial intelligence (AI) is used in the recruitment industry and how it could help people map their current and future skills to emerging jobs, or in some cases, don't even exist yet.

For Ian, the chance to look deeply and critically at the intersection between human potential and digital transformation was the perfect platform to explore how we could help people see their own ‘future of work’.

The programme helped him spot and put into context emerging trends in the workplace environment. Ian developed skills that means he keeps a finger on the pulse of what's changing – whether its new business models, new organisational ecosystems or new leadership approaches – so he's able to evaluate what that means for change within his own organisation.

In Ian's own future, his plan is to further develop his strategy into a practical tool that allows people to create a roadmap to their future work options.

“

Employers need to plan and invest for the changes now, upskilling and reskilling their workforces today to support the future needs of their businesses, or at the very least supporting affected employees to prepare for the challenges they will face in the new world of work.

Ian Scott

”

Dates

Intakes in March, May
& September 2023.

Duration

10 weeks, part-time.

Study mode

100% self paced online learning.

Location

Wherever you are.

Outcome

Level 8 (15 credits) NZQA
micro-credential.

[DT]

Micro-credential in Disruptive Technologies

Learn how new technologies can be your advantage.

A broad view of current and emerging disruptive technologies to understand their impact on businesses and industries and their potential to reinvent how the workplace and our societies operate. The role of different technologies in different contexts such as mobility, communication and finance is explored.

Topics covered

- Technology ecosystems.
- Artificial Intelligence and Machine Learning.
- Internet of Things.
- Cybersecurity.
- Big data and cloud computing.

What you'll walk away with

- An ability to identify and analyse the current and potential relevance, opportunity and impact of disruptive technology in the context of your practice.
- The skills to formulate evidence-based initiatives to utilise technology for desirable change within your practice.

Entry requirements

To enrol in this micro-credential, you need to have:

- A bachelor's degree or an equivalent level qualification; **or**
- Equivalent professional experience in a relevant field.

Find out how to demonstrate equivalent professional experience under [How to apply](#).

“

I used to think that tech took us farther away from people, art, culture, but I was wrong. Thanks to the DT course I now see how we can use tech to connect, create, and communicate. It has sparked new life into my ideas and opened my mind to the endless possibilities that DT's provide.

Anamarie Fanthorpe, Micro-credential in Disruptive Technologies graduate.

”

Apply here for DT

Intake dates for 2023 March, May & September

See [Key dates](#) for application deadlines

Programme delivery

Duration: 10 weeks, part-time.

Weekly commitment: 2 hrs per week directed learning via supplied materials and activities on the learning management system; up to 8 hrs self-directed learning per week (including further reading, self-sourced materials, assessment work and applying your learning into practice).

Study mode: 100% online learning, self paced.

Online sessions: Weekly 1.5 hr sessions to meet with industry experts for review, conversation, and debate focused on course material. These will be recorded and shared for those that are not able to attend the sessions.

More detailed information about session times is provided in the [Key information pack](#).

Assessments: applied learning

Two summative assessments.

Throughout the Micro-credential in Disruptive Technologies you will apply your learning through applied assessments and receive feedback from facilitators. These are valuable opportunities to reflect on the impact of disruptive technologies, and develop a pitch deck to present a plan for the potential adoption of disruptive technologies in your practice. You will be supported with weekly learning activities that are designed to help you develop your ideas.

More detailed information about assessment is provided in the [Key information pack](#).

Fees

Domestic students: NZ \$450 (incl. GST).

International students: Fees vary depending on your location – refer to the [International students](#) section for programme fees.

Domestic or international student? [Find out here](#).

Sampler & Advancer

This micro-credential is also available as a Sampler or Advancer short course. Read more about what a Sampler and Advancer short course is [here](#).

See the free [Sampler short course](#) on our website.

See the [Advancer short course](#) on our website.

Dates

Intakes in March, June
& September 2023.

Duration

10 weeks, part-time.

Study mode

100% self paced online learning.

Location

Wherever you are.

Outcome

Level 8 (15 credits) NZQA
micro-credential.

[ENTR]

Micro-credential in Entrepreneurship

Venture further than you've ever imagined.

Learn what it takes to be a future-ready entrepreneur as you discover, develop and drive forward your business ideas. Wherever you are on your journey to entrepreneurship, this micro-credential offers essential skills to take you to the next level.

Topics covered

- Strategic thinking.
- Market testing and prototyping.
- Project funding and finance.
- Communication and problem solving.
- Entrepreneur wellbeing.

What you'll walk away with

- An ability to identify and evaluate new and emerging entrepreneurial opportunities taking into account technological trends and current and future market needs.
- Tools to analyse and apply organisational culture, financial, leadership and collaboration strategies that enable and support innovation.
- An ability to critically reflect on personal and professional competencies as an entrepreneur and identify strategies to overcome barriers and mitigate risks.

Entry requirements

To enrol in this micro-credential, you need to have:

- A bachelor's degree or an equivalent level qualification; **or**
- Equivalent professional experience in a relevant field.

Find out how to demonstrate equivalent professional experience under [How to apply](#).

“

All the information was up to date and practical. During the programme we had to produce presentations which was great because I've been able to use it in a funding application. The micro-credential helped me get straight to the key messages and define my idea succinctly.

Daisuke Arai, Micro-credential in Entrepreneurship graduate.

”

Apply here for ENTR

Intake dates for 2023 March, June & September

See [Key dates](#) for application deadlines

Programme delivery

Duration: 10 weeks, part-time

Weekly commitment: 2 hrs per week directed learning via supplied materials and activities on the learning management system; up to 8 hrs self-directed learning per week (including further reading, self-sourced materials, assessment work and applying your learning into practice).

Study mode: 100% online learning, self paced.

Online sessions: Weekly 1.5 hr sessions to meet with industry experts for review, conversation, and debate focused on course material. These will be recorded and shared for those that are not able to attend the sessions.

More detailed information about session times is provided in the [Key information pack](#).

Assessments: applied learning

Two summative assessments.

Throughout the Micro-credential in Entrepreneurship you will apply your learning through applied assessments and receive feedback from facilitators. These are valuable opportunities to reflect on an entrepreneurial case study and develop a pitch deck and lean canvas for your own project idea. You will be supported with weekly learning activities that are designed to help you develop your ideas.

More detailed information about assessment is provided in the [Key information pack](#).

Fees

Domestic students: NZ \$450 (incl. GST).

International students: Fees vary depending on your location – refer to the [International students](#) section for programme fees.

Domestic or international student? [Find out here](#).

Sampler & Advancer

This micro-credential is also available as a Sampler or Advancer short course. Read more about what a Sampler and Advancer short course is [here](#).

See the free [Sampler short course](#) on our website.

See the [Advancer short course](#) on our website.



Dates

Intakes in February
& July 2023.

—



Duration

15 weeks, part-time.

—



Study mode

100% self paced online learning.

—



Location

Wherever you are.

—



Outcome

Level 8 (15 credits) NZQA
micro-credential.

[USD]

Micro-credential in Understanding Software Development Processes & Tools

Deliver sustainable technology solutions.

Understanding fundamental software development processes and tools is critical for many professionals no matter their role or context. Build a broad skill set with hands-on learning and critically engage with processes that are critical to developing ethical and relevant software applied in context.

Topics covered

- Software system fundamentals.
- Coding and data.
- Analysis and design.
- Testing and security.
- System setup and web resources.

What you'll walk away with

- Analyse the business, technology, data, and sociocultural dimensions of software systems and processes.
- Critically evaluate the role of software development processes and tools in addressing the changing requirements of organisations.
- Critically evaluate software development solutions in the context of professional or individual practice.

Entry requirements

To enrol in this micro-credential, you need to have:

- A bachelor's degree or an equivalent level qualification; **or**
- Equivalent professional experience in a relevant field.

Find out how to demonstrate equivalent professional experience under [How to apply](#).

“

Highly recommend! You learn a lot – the history of software development, what it takes to deliver a successful piece of software, popular programming languages and modern ways development teams organise their work. I loved how assessments were done – a fantastic way to learn while developing new skills but also doing it your own way. All of this in a supportive and engaging environment and easy-to-use system – what’s not to love?!

Andrey Sukhomlinov, Micro-credential in Understanding Software Development Processes and Tools graduate.

”

Apply here for USD

Intake dates for 2023 February & July

See [Key dates](#) for application deadlines

Programme delivery

Duration: 15 weeks, part-time

Weekly commitment: 2 hrs per week directed learning via supplied materials and activities on the learning management system; up to 6-8 hrs self-directed learning per week (including further reading, self-sourced materials, assessment work and applying your learning into practice).

Study mode: 100% online, self paced learning.

Online sessions: Weekly 1 hr online sessions for review, conversation, and debate focused on course material. These will be recorded and shared for those that are not able to attend the sessions.

More detailed information about session times is provided in the [Key information pack](#).

Assessments: applied learning

Two summative assessments.

Throughout the Micro-credential in Understanding Software Development Processes and Tools you will apply your learning through applied assessments and receive feedback from facilitators. These are valuable opportunities to evaluate software processes to workshop with your peers and complete a software development project by proposing changes to improve existing system functionality. You will be supported with weekly learning activities that are designed to help you develop your ideas.

More detailed information about assessment is provided in the [Key information pack](#).

Fees

Domestic students: NZ \$450 (incl. GST).

International students: Fees vary depending on your location – refer to the [International students](#) section for programme fees.

Domestic or international student? [Find out here](#).

Sampler & Advancer

This micro-credential is also available as a Sampler or Advancer Short Course. Read more about what a Sampler and Advancer Short Course is [here](#).

See the free [Sampler short course](#) on our website.

See the [Advancer short course](#) on our website.

Dates

Intakes in February,
June & October 2023.

Duration

72 weeks, part-time.

Study mode

Blended (live online sessions and five full day in-person residency block sessions per year) or 100% online.

Location

Wherever you are + in-person residency block sessions at academyEX HQ, 99 Khyber Pass Rd, Grafton Auckland.

Outcome

Level 9 (180 credits) NZQA master's degree.

[MTF]

Master of Technological Futures

Become a changemaker and innovate for the better.

Designed in close consultation with industry experts, a flexible programme to develop your capability to innovate for impact using emerging technologies or contemporary business models, applied to a self-defined project or research topic.

Topics covered

- Emerging and disruptive technologies.
- Contemporary business practices, including design sprints, agile and systems led strategies.
- Kaupapa Māori and indigenous leadership.
- Critical thinking, engaging with evidence.
- Research process, including methodologies and ethics.

What you'll walk away with

- Ability to lead organisational change in the context of emerging and disruptive technologies.
- Skills to recognise, access and critically engage in available scholarship and advanced specialised knowledge to remain professionally current.

- Ability to engage in self-reflection and recognise the potential to influence applied professional practice, through enhanced professional understanding underpinned by a kaupapa Māori philosophy with authentic engagement with the appropriate communities.
- Working in the content of practice, improve communication across disciplines and cultures within changing environments.
- Tools to apply professionally relevant knowledge and, using evidence, innovate within practice.
- Skills to analyse, understand and propose potential solutions to complex professional challenges.
- Ability to anticipate communication challenges in context of practice and determine effective appropriate communication methods to disseminate to target audiences and relevant and contemporary professional practice techniques to the wider audience.
- Ability to plan, execute and complete novel applied practice research that informs and impacts practice, contributing to profession-relevant knowledge.

(Continued over page...)

“

It makes you stop and reflect and get information rather than just using your same old thought processes to decide. It changes the lens on what you are doing

Linda Sturges, Master of Technological Futures graduate

”

Apply here for MTF

Intake dates for 2023 February, June & October

See [Key dates](#) for application deadlines

What you'll walk away with (con't)

Graduates completing a supervised Level 9 Research Project of 90 credits and above will also be able to demonstrate a high order of skill in the planning, execution and completion of a piece of original research or other scholarly work to an internationally recognised standard.

Entry requirements

To be admitted to this master's degree you need to have:

- A bachelor's degree or Level 7 graduate diploma (or higher) and relevant professional and/or technical experience that demonstrates an ability and potential to succeed; **or**
- Relevant professional and/or technical experience that demonstrates an ability and potential to succeed.

Find out how to demonstrate equivalent professional experience under [How to apply](#).

Getting to know you and your goals:

For admission into this master's programme you will have an interview with one of the programme team. It's a chance for you to ask any questions and ensure that this master's programme is the right fit for you. You can discuss your professional experience, the support available from our team and the commitment you can give to achieving your learning goals.

The following admission criteria will be applied:

- Commitment to professional development and gaining a competitive advantage in relation to business disruption and transformation according to the values and strategic directions of their industry, profession and/or community.
- Experience in a technical, business and/or community transformation role.

Attendance expectations

Attendance is an important component of student success and students are required to attend a minimum of 80% of all scheduled sessions.

Programme structure

At the highest level, the masters is broken into two parts, the Immersion Phase and the Project Phase.

The Immersion Phase is an intensive dive into the world of exponential technologies defining the future of work and business. The Project Phase is focused on developing, implementing, and researching a real-world project.

During the Immersion Phase, students are enrolled in four courses simultaneously, before selecting a pathway through the Project Phase. Students are supported to select the most appropriate pathway for their project during the development of their plan and negotiation of a Learning Agreement.

Apply here for MTF

Masters programme structure	Part 1: Immersion Phase	CISC8800	Applied Practice in Context	Level 8	15 Credits
		CISC8801	Research and Community	Level 8	15 Credits
		CISC8802	Research Question	Level 8	15 Credits
		CISC8888	Project Plan	Level 8	15 Credits
	Part 2: Project Phase	CISC8830	Technological Futures Project	Level 8	30 Credits
		CISC9890	Technological Futures Project	Level 9	90 Credits
		CISC8875	Technological Futures Project	Level 8	75 Credits
		CISC9845	Technological Futures Project	Level 9	45 Credits

Programme delivery

Duration: 72 weeks, part-time

Weekly commitment: In addition to the session times below, allow 16-20 hrs per week for self directed learning (includes working on your assessments and researching your project interest area).

February and October intakes: Blended study mode that differs between Immersion and Project phases.

Immersion phase: A total of 5 x residency blocks over the programme (3 full days per month). Two of these (#1 and 5) are held in-person, the remainder are held online.

Project phase: 6 x full day block sessions (two held in-person, the rest online) over the first 6 months of the Project phase.

June intake: 100% online study mode that differs between Immersion and Project Phases.

Immersion phase: Delivered through highly interactive online sessions that support learners at distance to participate in learning with peers who are both online and onsite.

Project phase: 1 x full day online block sessions each month for the first 6 months of the Project Phase.

Location: In-person sessions at academyEX HQ, (option to join virtually).

Additional support: Optional weekly drop-in Q&A sessions for support.

Why attend a block session in-person?

If you're able, we strongly encourage you to come to all full day residency and block sessions in-person at academyEX HQ in Grafton Auckland. It's an incredible opportunity to make those lasting connections with your cohort and collaborate together for broader ideas and understanding that can add immeasurable value to your learning.

See [Key information pack](#) for all specific dates and times.

Assessments: applied learning

The programme is applied, which means learning is demonstrated through a real-world project that delivers actual business outcomes – not a written thesis. A project plan is developed and driven by students along with guidance from a dedicated team of advisors.

More detailed information about assessment is provided in the [Key information pack](#).

Fees

Domestic students: NZ \$16,260 (incl. GST)
Early Bird Saving and scholarships available.

International students: Fees vary depending on your location – refer to the [International students](#) section for programme fees. 10% Early Bird Saving available.

Domestic or international student? [Find out here](#).

Find out more about [Scholarships & funding options](#).

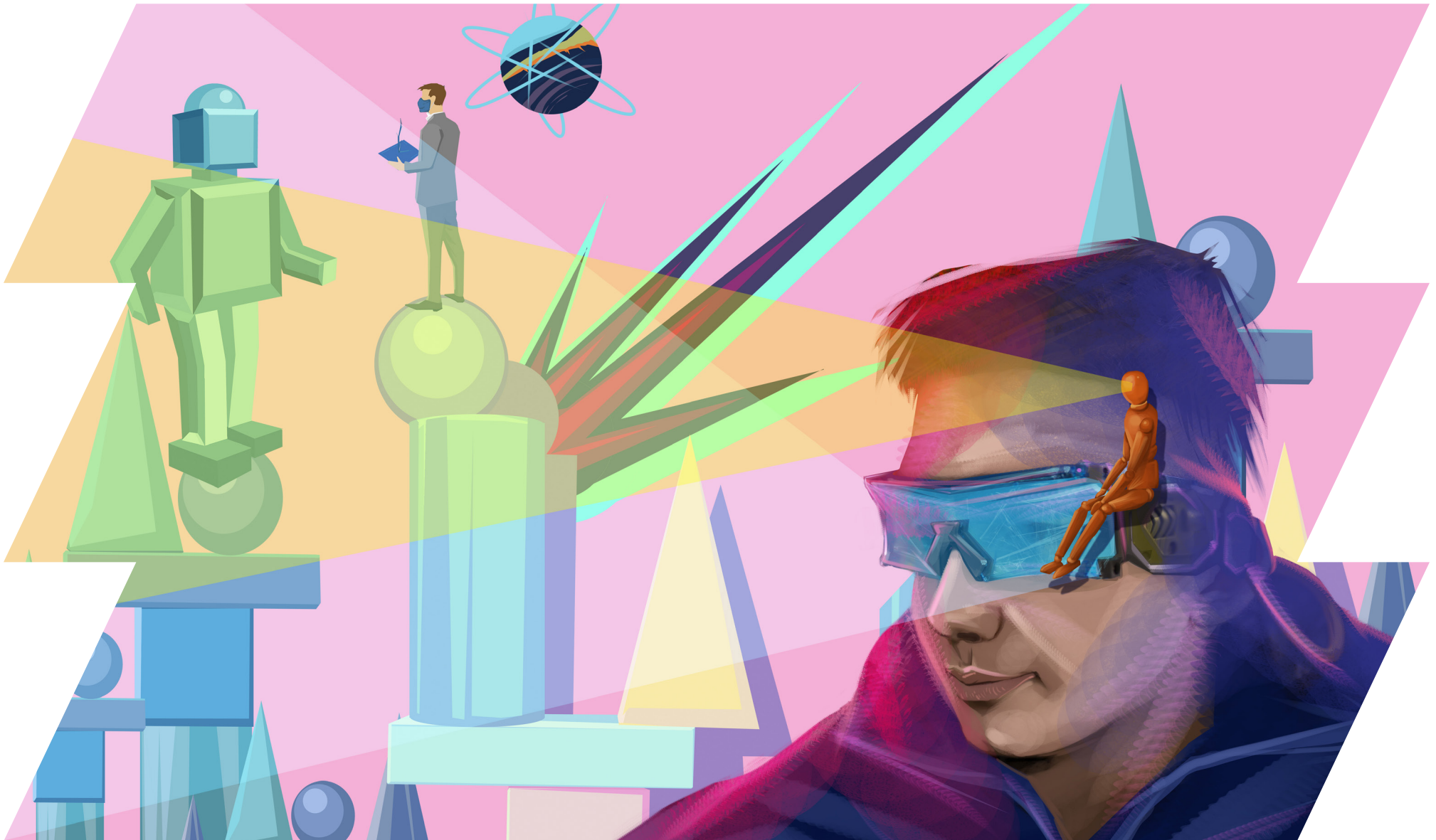
"Once a new technology rolls over you, if you're not part of the steamroller, you're part of the road."
— Stewart Brand

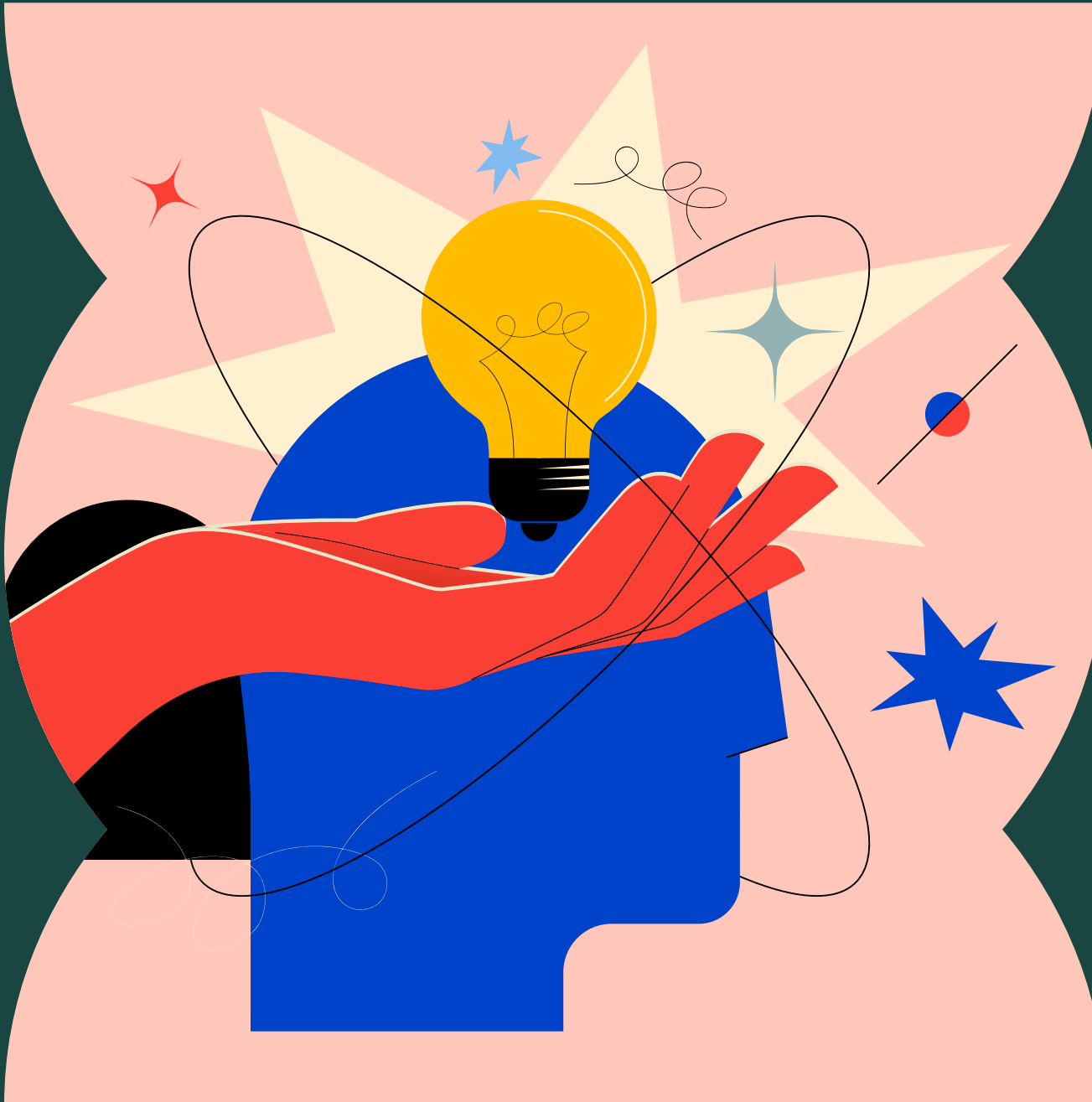


Key dates for Tech Futures Lab

Micro-credential in Disruptive Technologies	Programme Intake	Scholarship (Domestic) Application Close Date	Application Close Date	Start Date	End Date	
	March 2023	N/A	8 Mar 2023	15 Mar 2023	23 May 2023	
	May 2023	N/A	22 May 2023	29 May 2023	6 Aug 2023	
	September 2023	N/A	7 Aug 2023	11 Sep 2023	19 Nov 2023	
Micro-credential in Entrepreneurship	Programme Intake	Scholarship (Domestic) Application Close Date	Application Close Date	Start Date	End Date	
	March 2023	N/A	25 Feb 2023	1 Mar 2023	9 May 2023	
	June 2023	N/A	31 May 2023	7 Jun 2023	15 Aug 2023	
	September 2023	N/A	6 Sep 2023	13 Sep 2023	22 Nov 2023	
Micro-credential in Understanding Software Development Processes & Tools	Programme Intake	Scholarship (Domestic) Application Close Date	Application Close Date	Start Date	End Date	
	February 2023	N/A	20 Feb 2023	27 Feb 2023	11 Jun 2023	
	July 2023	N/A	10 Jul 2023	17 Jul 2023	29 Oct 2023	
Master of Technological Futures	Programme Intake	Scholarship + Early Bird Saving Application Close Date (Domestic)	Early Bird Saving Application Close Date (International)	Applications Close	Start Date	End Date
	February 2023	26 Jan 2023	29 Dec 2022	9 Feb 2023	23 Feb 2023	31 Jul 2024
	June 2023	2 Jun 2023	5 May 2023	16 Jun 2023	30 Jun 2023	5 Dec 2024
	October 2023	21 Sep 2023	24 Aug 2023	5 Oct 2023	19 Oct 2023	26 Mar 2025

Early Bird Saving ends and scholarship applications close for domestic applications 4 weeks before the intake start date / Early Bird Saving ends for international applications 8 weeks before the intake start date
Applications close for micro-credentials and postgraduate certificates close 1 week before the intake start date / Applications close for master's programmes 2 weeks before the intake start date





Earth Futures Lab

The environmental strain we see on our planet today is a clear result of the embedded social systems and practices we have created over the anthropocene.

Courses and qualifications to develop capabilities, innovations and actions that lead to equitable, sustainable outcomes.

Over the past few years we have delivered postgraduate programmes that place sustainable impact at the heart of the learning.

We have now brought these programmes together under our newest faculty, Earth Futures Lab to recognise there is a crucial and pressing need for people to build skills and knowledge in sustainability.

With insight and by leveraging today's technology tools, we have the chance to create strategies and innovations that take a systems thinking approach, have a circular design and strive to regenerate our natural environments and our communities.



Earth Futures Lab

Our programmes explore what it means to go beyond being sustainable, how to use technology to listen and learn from the world and how finance plays a role in making positive systems-led impact. In all our programmes, we focus on environmental regeneration and to find new ways that provide equitable sustainable outcomes for nature and people.

At Earth Futures Lab we look to the future with open eyes and ask how we can use this massive transformation for the betterment of people, place and our planet.



[Student story]

Kelly Rummins

Postgraduate Certificate in
Connected Environments

Kelly Rummins was looking for a career shift when she enrolled for the Postgraduate Certificate in Connected Environments. It fit perfectly with her goal to work in the environmental space. Learning to use technology for sustainability goals is central to the programme.

“One of the big parts was the ongoing focus on the problem you are trying to solve.”

Choosing to study the Connected Environments postgraduate certificate was a good decision for Kelly. It played a part in her successful switch from a career in Market Research to the Chief Marketing Officer for Starboard Maritime Intelligence, a digital platform used by government agencies to monitor and protect the world’s oceans.

What surprised Kelly on the programme was how technology like the Internet of Things (IoT) can help with problem solving in the compliance and regulation realm. The knowledge she gained fit perfectly with Starboard’s aim to ‘increase productivity for those working to protect our oceans and environment’.

Kelly’s background in market research made it easier to grasp what big data can do but also the challenges it presents. When creating technology that connects environments, ethics becomes an important foundation to the design. “You can get pretty excited thinking about all the things you could monitor but you need to think about the right way to do that. And build trust into the solution.”

Now in her role at Starboard Maritime Intelligence, Kelly applies her knowledge of IoT, big data and sustainability principles everyday, supporting the protection of biodiversity and livelihoods for nations around the world.

“

Compliance is there to solve a problem of course. With IoT and tech in general, rather than slow development down or create a pile of documentation, it actually speeds things up. It changes the conversation to become ‘how can we support people to solve problems in really creative ways’.

Kelly Rummins

”



[Student story]

Lisa Bentley

Micro-credential in Leading Beyond Sustainability

Lisa Bentley decided to take on the Leading Beyond Sustainability micro-credential after gaining her NZ qualification to practise as a financial advisor. Lisa spent time getting to know the financial market in the Hawkes Bay first before realising she was keen to upskill further and grow her capability in the ethical investing arena.

The Leading Beyond Sustainability micro-credential gave Lisa the insight to go beyond the basics of sustainability and find ways to apply practical steps that will drive sustainable futures.

The financial market is an ideal place for this ethos to spread. As owner of Peak Portfolio Management in Hawkes' Bay, Lisa understands how important sustainability in the finance sector is to grasp. As investors become more environmentally and socially conscious with their savings choices, all financial advisors need to know what true sustainability is.

The short course has given Lisa practical skills she's been able to apply in her financial advice to her clients.

"I'm able to go further than the flyer a KiwiSaver provider gives you. I can look at a provider in detail and question their sustainability claims, and whether they are greenwashing."

“

I'm passionate about how we can use investing in a good way, to make sure we can invest in a way that makes our future better. This course was a great way to dive deeper into sustainability and develop my knowledge so I could look at KiwiSaver provider credentials

Lisa Bentley

”

**Dates**

Intakes in March, June
& September 2023.

—

**Duration**

8 weeks, part-time.

—

**Study mode**

100% self paced online learning.

—

**Location**

Wherever you are.

—

**Outcome**

Level 8 (15 credits) NZQA
micro-credential.

[LBS]

Micro-credential in Leading Beyond Sustainability

Online course that unpacks all aspects of sustainability.

Go beyond the basics of sustainability and kick start your journey with practical steps and innovative approaches to help drive a resilient and thriving future.

Topics covered

- What is sustainability?
- Indigenous and purpose driven leadership.
- Systems thinking.
- Impact measurement and strategy.

What you'll walk away with

- Ability to evaluate diverse, contemporary and emerging approaches to leading authentic sustainability in practice.
- Ability to critically reflect on personal, professional and collective skill and knowledge gaps in the context of working toward authentic sustainable futures in areas of practice.
- A project brief that applies strategic approaches to address sustainability challenges in your context.

Entry requirements

To enrol in this micro-credential, you need to have:

- A bachelor's degree or an equivalent level qualification; **or**
- Equivalent professional experience in a relevant field.

Find out how to demonstrate equivalent professional experience under [How to apply](#).

“

I've learned what it means to practise kaitiakitanga (guardianship) in NZ today and how we can use this lens to help us live our lives. Sustainability is much wider and holistic than I realised and I've enjoyed learning about the connections between the many aspects.

Steph Crummer, Micro-credential in Leading Beyond Sustainability graduate.

”

Apply here for LBS

Intake dates for 2023 March, June & September

See [Key dates](#) for application deadlines

Programme delivery

Duration: 8 weeks, part-time.

Weekly commitment: 2 hrs per week directed learning via supplied materials and activities on the learning management system; up to 10 hrs self-directed learning per week (including further reading, self-sourced materials, assessment work and applying your learning into practice).

Study mode: 100% online learning, self paced.

Online sessions: 3 × 1.5 hr online sessions during weeks 1, 3 and 6 of the course, for review, conversation, and debate focused on course material. These will be recorded and shared for those that are not able to attend the sessions.

More detailed information about session times is provided in the [Key information pack](#).

Assessments: applied learning

Two summative assessments.

Throughout the Micro-credential in Leading Beyond Sustainability you will apply your learning through applied assessments and receive feedback from facilitators. These are valuable opportunities to reflect on a case study of your choice, and develop a project brief for a sustainability initiative in your context. You will be supported with weekly learning activities that are designed to help you develop your ideas.

More detailed information about assessment is provided in the [Key information pack](#).

Fees

Domestic students: NZ \$450 (incl. GST).

International students: Fees vary depending on your location – refer to the [International students](#) section for programme fees.

Domestic or international student? [Find out here](#).

Sampler & Advancer

This micro-credential is also available as a Sampler or Advancer short course. Read more about what a Sampler and Advancer short course is [here](#).

See the free [Sampler short course](#) on our website.

See the [Advancer short course](#) on our website.

Dates

Intakes in February, June
& September 2023.

Duration

10 weeks, part-time.

Study mode

100% self paced online learning.

Location

Wherever you are.

Outcome

Level 8 (15 credits) NZQA
micro-credential.

[IOTS]

Micro-credential in The Internet of Things for Sustainability

Learn to use technology for sustainable outcomes.

A strategic programme for anyone passionate about using technology to address sustainability challenges. Understand how the Internet of Things (IoT) can support sustainability goals in business, communities and organisations.

Topics covered

- IoT for sustainability.
- Systems thinking, knowledge, sharing and circular economies.
- Data, governance and ethics.
- Case studies: smart cities, agriculture, health and wellbeing and transport and logistics.

What you'll walk away with

- An ability to evaluate the business, technology and data dimensions of IoT systems for authentic and sustainable value.
- An ability to critically evaluate the effectiveness of IoT technologies in addressing sustainability challenges in global and local, urban and rural contexts.
- The skills to develop and apply IoT solutions to address core sustainability challenges in practice.

Entry requirements

To enrol in this micro-credential, you need to have:

- A bachelor's degree or an equivalent level qualification; **or**
- Equivalent professional experience in a relevant field.

Find out how to demonstrate equivalent professional experience under [How to apply](#).

“

It was great to get an in-depth understanding of IoT and learn more about sustainability principles. I had covered a couple of those in my Health Sciences degree but many were new and that was really fascinating to learn about. In my organisation we've started to think more critically about our impact, especially in the e-waste space. The course helped me to identify where we can make a difference.

Dominic Williams, Micro-credential in Internet of Things for Sustainability graduate.

”

Apply here for IOTS

Intake dates for 2023 February, June & September

See [Key dates](#) for application deadlines

Programme delivery

Duration: 10 weeks, part-time.

Weekly commitment: 2 hrs per week directed learning via supplied materials and activities on the learning management system; up to 8 hrs self-directed learning per week (including further reading, self-sourced materials, assessment work and applying your learning into practice).

Study mode: 100% online learning, self paced.

Online sessions: Weekly 1.5 hour online sessions with industry experts for review, conversation, and debate focused on course material. These will be recorded and shared for those that are not able to attend the sessions.

More detailed information about session times is provided in the [Key information pack](#).

Assessments: applied learning

Two summative assessments.

Throughout the Micro-credential of The Internet of Things for Sustainability you will apply your learning through applied assessments and receive feedback from facilitators. These are valuable opportunities to work collaboratively and independently to evaluate and develop proposals for IoT systems that could address sustainability challenges. You will be supported with weekly learning activities that are designed to help you develop your ideas.

More detailed information about assessment is provided in the [Key information pack](#).

Fees

Domestic students: NZ \$450 (incl. GST).

International students: Fees vary depending on your location – refer to the [International students](#) section for programme fees.

Domestic or international student? [Find out here](#).

Sampler & Advancer

This micro-credential is also available as a Sampler or Advancer short course. Read more about what a Sampler and Advancer short course is [here](#).

See the free [Sampler short course](#) on our website.

See the [Advancer short course](#) on our website.

**Dates**

Start anytime.

**Duration**

6 weeks, 6-8 hrs per week.

**Study mode**

100% self paced online learning.

**Location**

Wherever you are.

**Outcome**

Digital badge.

**Fees**Domestic students:
NZ \$400 (incl GST)International students:
see [International student fees](#) section.**[IMP]****[Register here for IMP](#)**

Advancer: Impact Investing

Delve into the world of impact investing and explore how it can be used to drive positive change.

Impact investing is an evolving but powerful funding mechanism that supports business and project ideas to grow and have a positive impact on the earth's future. Through this 6 week advancer course, you will hear from seasoned impact investors who share their knowledge and experiences to help you to understand the role of impact investing within the wider funding ecosystem.

- Reflect on the importance of a clear purpose and mission for impact investing and begin to understand how impacts can be identified and measured.
- Identify opportunities where impact investment practices might align to your own project or business ideas.

Engaging with the course

This Advancer short course is designed to be completed in 6 weeks (6-8 hours of content per week), although you will have access to the content for 8 weeks from the date you started learning.

You can join this course at any time, it is delivered 100% online, and you can learn at a time and place that works best for you.

Topics covered

- Demystifying impact investing terminology and frameworks.
- Impact investing trends and insights.
- Vision and purpose.
- Identifying and measuring impact.

What you'll walk away with

- Develop an understanding of what impact investing means and how it has evolved as a funding mechanism for positive change overtime.

Joining a community

You will be joining a community of like-minded, future focused people who are diving into the world of impact investing. Everyone will bring their own unique perspectives and experiences to add even more depth to the content provided.

Key dates for Earth Futures Lab

Micro-credential in Internet of Things for Sustainability	Programme Intake	Scholarship (Domestic) Application Close Date	Application Close Date	Start Date	End Date
	February 2023	N/A	20 Feb 2023	27 Feb 2023	07 May 2023
	June 2023	N/A	30 May 2023	06 Jun 2023	14 Aug 2023
	September 2023	N/A	4 Sep 2023	11 Sep 2023	19 Nov 2023

Micro-credential in Leading Beyond Sustainability	Programme Intake	Scholarship (Domestic) Application Close Date	Application Close Date	Start Date	End Date
	March 2023	N/A	13 March 2023	20 March 2023	14 May 2023
	June 2023	N/A	5 June 2023	12 June 2023	6 Aug 2023
	September 2023	N/A	28 Aug 2023	4 Sep 2023	29 Oct 2023

Early Bird Saving ends and scholarship applications close for domestic applications 4 weeks before the intake start date / Early Bird Saving ends for international applications 8 weeks before the intake start date

Applications close for micro-credentials and postgraduate certificates close 1 week before the intake start date / Applications close for master's programmes 2 weeks before the intake start date

" Never doubt that a small group of thoughtful, committed citizens can change the world. Indeed, it is the only thing that ever has."

– Margaret Mead



Our community

academyEX is about creating opportunities for exponential impact – for you and the people and places that matter to you. We focus on community to create space and environments for you to connect, collaborate and extend your knowledge, and your network.





Converge

There's not many places you can come for robust, critical yet respectful discussion; about emerging technologies, making change from within, the ethics of big data or new pedagogical approaches to education.

But you can at Converge, our community meetup. It's a regular online meetup where learners across any of our postgraduate programmes, across any of our three faculties, can come together to share, ideate, collaborate and test the boundaries of what innovation could be.

As a learner or alumni, you can bring along a project – no matter what stage it's at – and share with the Converge community. You can feel confident you'll get considered feedback, new perspectives, suggested contacts and even keen collaborators.

Alumni

When you learn with academyEX you join an alumni network of changemakers, entrepreneurs, social innovators, and just good people doing incredible things both here and abroad. Connecting with academyEX alumni means you'll grow a network of people who share similar visions to make positive change and aren't afraid to experiment, test and learn and look at things with a systems-lens perspective.

To encourage more moments where alumni can connect, we hold regular events like Converge and provide alumni discounted rates to our paid events. Plus we're always formulating new forums that can help alumni members make the impact they're dedicated to making.

Events and extras

Our regular events, either online or in person, provide extra opportunities to explore new ideas, expand your skills and network and keep your energy up on whatever it is you're working towards.

Check out our upcoming events [here](#).



Our learning spaces

Learning with academyEX means learning from wherever you are. With easy to use digital collaboration tools, you'll stay connected with both your cohort and your programme team.

academyEX HQ

Our headquarters are in Auckland, New Zealand at 99 Khyber Pass Road, Grafton, 1023. We refer to it as 'the Lab'. This is where we run all in-person sessions and any in person events. Nothing like a university lecture hall, it's a creative environment that's conducive to learning and collaboration. As a student you're welcome anytime to come and use the Lab as your remote working spot. On the fringe of the city centre, the Lab is easy to reach via public transport and there's plenty of parking options around too.

Online learning spaces

To support our promise to learn from wherever you are, you'll be set up with access to digital tools and spaces that work on all devices so you can jump in to learn when it suits you or join your online sessions from the office, the beach or the kitchen table.

- **Learning Management System**

The academyEX Learning Management System (LMS) is your online hub for all learning with academyEX. Here, you can log in to easily access all your course content and study resources, comment or share your thoughts on the content, ask questions of your cohort as well as upload your assessments and check your grades. It's your one-stop-shop for everything you need throughout your journey.

- **Slack**

We use Slack as our messaging and sharing platform – it's a quick and easy way for all students to communicate, discuss, question and critique over the course of a programme. Through Slack you can engage with your fellow students, either one to one or with the entire cohort, as well as the Academic Programme Team and Support Teams. Slack is easy to set up and can be used in a browser, as a desktop app, or on your phone or tablet.

- **The academyEX eLibrary**

Our eLibrary contains links to a range of online resources for students, including the EBSCO and Proquest online databases, ebook libraries that academyEX subscribes to, along with other search engines and open access resources in educational research and scholarship. The eLibrary can be accessed via the academyEX Learning Management System.

- **Zoom**

We use the Zoom platform to deliver live online sessions, which are an integral part of your learning experience and engagement with your chosen programme of study. If you haven't used Zoom or need some help setting it up, we'll provide a 'how-to' at least two weeks before you begin your programme with us, so you're up and running and ready to join from day one.

- **Turnitin**

To ensure and maintain academic integrity, academyEX uses Turnitin. All written submissions must be uploaded to Turnitin to generate a Similarity Report. Turnitin is used as a tool to support students in gaining insights into their academic writing and citation practice as well as a way for markers to provide feedback on written assessments. Please refer to the academyEX Code of Conduct for more information about academic integrity.

- **Tuia Te Kupu**

Tuia Te Kupu is our online community interactive journal club. This club gives candidates a forum to collaboratively and critically evaluate recent academic articles and information.

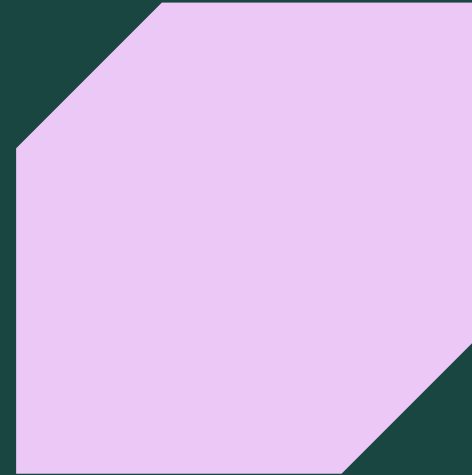
Things you'll need to learn with us

To access online materials, class sessions and communication tools we use to stay in touch, you will need access to a laptop, a mobile/handheld device and a reliable connection to the internet. To participate in the live online class sessions your device will need a camera and microphone. If you're using a device provided by your workplace, you may need administration rights to that device to install apps like Zoom and Slack.

The academyEX team

When you learn with academyEX you connect into a network of approachable, humble and supportive educators who look at the world with open minds and share enthusiasm to innovate for positive change.

A key advantage of our small size is that you will never just be a number. We know each and every one of our students and take great care to support them through their learning journey.



Frances Valentine
Founder and CEO



Fee Webby
General Manager



Dr Hayley Sparks
Academic Director

Fuatino Peilua
Director Studies



Te Mihinga Komene
Pou Ārahi (cultural advisor)
Nō Waikato-Maniapoto, Ngāpuhi,
Ngāti Tamaterā, Ngāti Porou



Jade Tang-Taylor
Innovation Director



Fiona Pond
Programme Lead

Master of Technological Futures, PG Cert.
in Human Potential for the Digital Economy
& PG Cert. in Connected Environments



Dr Dave Parsons
National Postgraduate Director
Postgraduate Cert.in Digital
& Collaborative Learning



Dr Allanah Johnson
Programme Lead
Master of Change &
Organisational Resilience



Dr Herbert Thomas
Programme Lead
Master of Contemporary
Education



Hancine Samvelyan
Programme Lead
Postgraduate Cert. in Leading
Change for Good

Supporting our learners to succeed

At academyEX we want you to succeed.

We're committed to creating inclusive learning environments and we work alongside all our students to support them through their studies. This support includes educational and learning support, as well as different types of non-educational support.

Our teams work closely with each other so you will always have a friendly point of contact to help you navigate your learning journey. To access our Student Support and Wellbeing services simply call (649) 964 4444 or email us at support@academyex.com

Your health & wellbeing

Learners at academyEX have access to a range of health and wellbeing services via Whakarongorau Aotearoa who run digital telehealth services, offering health, mental health and addictions support across digital channels. Referrals to other agencies are available for more personal/one-on-one advice and support. If you ever feel there are circumstances or impairments that impact on your learning, we encourage you to speak to your Programme Lead or the Academic Registrar.

Disability services

academyEX is committed to providing a range of resources and strategies to help students who have provided information and verification of impairment.

If this is relevant to you, the potential services available may include assistance with note-taking, assistance with academic study due to learning impairments such as dyslexia, sign language interpretation, and so on. The Programme Coordinator will reach out to students privately to see if they wish to discuss any impairment-related support with the Programme Lead. Students are also encouraged to reach out to the Programme teams so that they can be effectively supported throughout the Programme.

ManaakiFono: Māori & Pacific support

academyEx is a multicultural organisation that prioritises opportunities for promoting Māori and Pacific student success in all our Programmes. ManaakiFono is our main forum for academic and cultural support for our Maori and Pacific students. We can also provide support around te reo Māori, pastoral guidance and financial support in the form of scholarships and discounts.

" Never underestimate the power of dreams and the influence of the human spirit. We are all the same in this notion: The potential for greatness lives within each of us."

– Wilma Rudolph





Scholarships and ways to fund your learning

Impactful futures start with equitable opportunities. At academyEX we're on a mission to provide as many of those opportunities for as many people to learn, so they can participate with capability and confidence in the future. We do this by providing both financial support through scholarships and funding advice to help you find ways to cover tuition fees and reduce the financial barriers to learning.

2023 Scholarships

Our range of karahipi or scholarships are targeted to support more people gain the skills, knowledge and qualifications they need to create impactful futures.

The following scholarships cover 75% of tuition fees for Postgraduate Certificate and Masters programmes. There is a limited number of scholarships available for each intake. Take a look below to see if one of our scholarships fits you and check out our [Scholarships](#) page for more details.

- **Tangata Whenua** – for learners who identify as Māori.
- **Pacific Ako** – for learners who identify as having Pacific heritage.
- **Taipakeke** – for learners who are aged 60 years and over.
- **Impact** – for learners who are positively impacting people, society and/or the planet.

Future of Education Scholarship

From May, 1st, 2023, NZ registered teachers will be eligible for a \$3,220 including GST scholarship, for our Postgraduate Certificate in Digital and Collaborative Learning programme starting in August 2023. This leaves you just \$100 to pay as the administration fee.

If you have any questions or would like to discuss scholarship opportunities relevant to you, get in touch with us at hello@academyex.com.

Important things to know about our scholarships.

Scholarships are open to domestic students only (both those in NZ and offshore). You can apply for a scholarship through the enrolment process. The Impact Scholarship does have additional criteria you need to meet in order to be granted it. Check the [Scholarships](#) page on our website for Scholarship criteria, terms and conditions and further information about scholarships and other funding opportunities.

Early Bird Saving

We offer a 10% Early Bird Saving on all postgraduate certificates plus master's programme fees. To receive the Early Bird Saving, domestic students must apply 4 weeks prior the start date of an intake, and international students must apply 8 weeks prior. The discount will be applied to your invoice automatically through the enrolment process.

Important information about Early Bird Savings.

You cannot receive both an Early Bird Saving and a Scholarship. If you receive a scholarship, the remaining amount payable will not be discounted with the 10% Early Bird Saving.

Ways to fund your learning

If you don't qualify for a scholarship with academyEX or you need to find financial support to cover the remaining balance of your fees, there are a number of ways you might be able to do this.

• StudyLink

Postgraduate certificate and master's students are eligible to apply for StudyLink Student Loans (micro-credentials are not covered). You must be fully enrolled before you can apply for a StudyLink Loan. To check your eligibility or to apply for a Student Loan, visit the Ministry of Social Development [StudyLink website](#).

• Fees Free

First-time higher education students may be eligible for one year's study or two years' training fees-free. Check your eligibility on the [Fees Free website](#).

There are postgraduate scholarships available for teachers and educators in New Zealand. Check our website for more information or contact us to discuss your situation.

academyEX takes no responsibility for the approval or otherwise of an applicant's application for a student loan. A student enrolled remains liable for the fees in accordance with [academyEX Terms and Conditions](#).

Learning as an international student with academyEX

At academyEX we are accredited* to welcome international learners, whether based in Aotearoa New Zealand or connecting in from abroad.

*academyEX is a signatory to the New Zealand Education (Pastoral Care of Tertiary and International Learners) Code of Practice 2021

International students living in New Zealand

If you're an International Student who intends to learn with academyEX while in New Zealand, you'll enjoy the opportunity to learn alongside people from a range of diverse backgrounds and cultures. Our teaching and learning approach focuses on the learner and we encourage all learners to bring their whole selves to their learning experience.

There is important information you need to know as an international student living in New Zealand. One important requirement is an appropriate visa that allows you to study with a New Zealand education provider.

That can be either a Student Visa or other relevant visa with conditions that allow you to study. We can help you connect with the right authorities at New Zealand Immigration so you can make these arrangements. You can find more information about this and more in our [Important information for international students](#) pack.

International students outside of New Zealand

For learners based outside of New Zealand, we aim to make participating in our programmes as accessible as possible.

Our short courses (Samplers, Advancers and micro-credentials) are delivered entirely online with self-paced learning. Optional weekly online sessions for micro-credentials are run in real-time over Zoom. If the class time doesn't fit your schedule, you can catch up by watching the recording. Our proprietary learning management system (LMS), encourages conversation and knowledge sharing between students and class facilitators. We also use collaboration tools to make it easy to have direct or group conversations and share extra resources you might find as you explore your learning.

For our international postgraduate students completing certificates or master's programmes, in addition to using LMS for self-directed online learning, we run all our block sessions in a hybrid format. This approach gives you the opportunity to connect, collaborate and learn with your cohort and your facilitators from wherever you are.

English language requirements

If English is not the main language in your country, you will need to provide evidence of English language competence. You can find out more information about those requirements in our [Important information for international students](#) pack.

academyEX and kaupapa Māori

When you learn with academyEX, you experience an organisation that has its roots firmly planted in Aotearoa New Zealand but looks out towards the world.

As a young nation that is actively working to recognise Tiriti O Waitangi (The Treaty of Waitangi) through our education system, at academy EX we consciously create learning environments that are culturally responsive and inclusive, not just of Māori and Pacific learners but all cultures from around the world.

Kaupapa Māori means ‘the Māori way’ and defines the approach, customs, principles and ideals of the indigenous Māori culture we use to guide our way at academyEX.

We aim to incorporate the knowledge, skills, attitudes and values of Māori society in our teaching and learning in order to support Māori learners to succeed but also

celebrate and increase the awareness of these unique aspects of our indigenous culture. Sharing that knowledge with learners from other nations can develop new understanding and ignite positive change within other communities.

Special Early Bird Saving in 2023

25% Early Bird Saving is applied to the tuition fees of the following intakes if applications from international students are received at least 8 weeks before the start dates of the programmes.

1. The October 2023 intake for the Master of Technological Futures.
2. The October 2023 intake for the Master of Change and Organisational Resilience.
3. The January 2024 intake for the Master of Contemporary Education.



International student fees	Studying in New Zealand			Studying Offshore		
	NZD	AUD ²	USD ³	NZD	AUD ²	USD ³
Advancer courses	\$400 / \$1035	N/A	N/A	\$400 / \$900	\$327 / \$846	\$225 / \$576
Micro-credentials	\$1,125	N/A	N/A	\$1,087	\$1,022	\$695
Postgraduate certificates	\$16,599	\$15,600	\$10,625	\$10,825	\$10,175	\$6,929
Master's degrees	\$44,000	\$41,360	\$28,160	\$28,695	\$26,973	\$18,365

1. When studying in New Zealand, a 15% Goods and Services (GST) Fee applies. This is included in the fees for studying in New Zealand above.

2. Australian dollar conversion based on an exchange rate of \$0.94 for every \$1 New Zealand dollar.

3. United States dollar conversion based on an exchange rate of \$0.64 for every \$1 New Zealand dollar.

N/A – 100% online delivery for all students whether in New Zealand or studying offshore. If you are in New Zealand, NZD fee is payable.

10% Early Bird Saving is applied to the above tuition fees if applications are received at least 8 weeks before the advertised start date of the programme intake. See 2023 Student Prospectus for specific dates.

How to apply

If you've chosen a programme you want to study, you can apply for it through our website. Just click the 'Apply here' button for the programme you want in this prospectus (top right) and it will link you to that webpage.

Once there, you can select 'Apply Now' to begin your application.



Applying for a programme with us is easy. There are three key steps you need to take:

1. Complete an application through our online portal. Simply visit the course page you want to apply for and use the 'Apply here' in the top right of the page.

You will need to have following documentation handy:

- Academic qualification transcripts.
- Relevant work experience. See below for more information about what qualifies as relevant work experience.

For domestic students: all the above plus;

- A copy of your passport or birth certificate or a New Zealand citizenship certificate.

For international students: all the above plus;

- A copy of your passport.
- Proof of your English language proficiency.
- Your current Visa status if you're intending to study in New Zealand.

Extra documentation:

As part of your online application, some of our programmes require a written or verbal (video) Statement of Intent (SOI). The SOI is designed to help you explain what you're intending to get out of the programme and your learning experience. You will find a Statement of Intent form available to complete during your online application (where applicable).

2. For master's applications and all international students, you will also have a one to one interview with us – so you can meet us but also to talk about what you're looking for and ensure academyEX is the right fit for you. We can do this in person or virtually if you're not currently in Auckland.
3. Pay your programme fees in full with academyEX. If you've applied for a scholarship during your enrollment application, we'll send an invoice for the remaining balance once the outcome of your scholarship application is finalised.

What qualifies as relevant work experience?

Relevant professional industry experience can include paid or voluntary roles within organisations where formal or informal leadership can be evidenced (for example, management and team leadership roles, elections to Boards, project leadership).

Evidence that can be provided includes: professional and or community awards; references; published (or shared) outputs; invitations to represent professions and communities at conferences, by media. You will need to upload this evidence as part of your application or discuss it during the interview process.

Specific information for international students

If you are accepted onto a programme with us, you'll need to complete an application for a Student Visa with Immigration New Zealand or check whether you need to apply for a variation of conditions on your current visa to allow you to study. You can use their handy website tool for specific details about your nationality and current situation.

You will also need to provide evidence of your fee payment to Immigration New Zealand as part of completing your Visa application.

What happens then?

Once your application has been received, and the necessary checks done, academyEX will:

- Officially offer you a place on the programme applied for; **or**
- If your application is declined we'll provide the reasons why and an opportunity to discuss this if you wish.

Following your official acceptance of the offer of a place on the programme, and providing the required documentation is in order and fee payment arrangements are in place, you will then be enrolled as a student.

Enrolment terms & conditions

On application, all students must agree to the academyEX Student Terms and Conditions before their enrolment into a programme can be processed. These [Terms and Conditions](#) outline all refund entitlements.

The fee for the programme is due seven days prior to the advertised start date of the programme.

Selection criteria

When the number of eligible applicants for admission exceeds the number of places available, the following selection criteria will be applied:

- Assessed level of personal motivation to complete the qualification;
- Coherence in the expression of ideas and opinions;
- Practice aptitude;
- Academic aptitude;
- Level of awareness of the discipline(s);
- Quality of independent references.

These criteria are not ranked in any order. Applicants who meet the greatest number of criteria will be the preferred applicants.

Selection will be made by a person or persons with the delegated authority to offer places to applicants.

They will select students on the basis of written information supplied on the enrolment form. At their discretion, an interview (in-person or electronic) may be required.

Conditional enrolment

There may be instances where an enrolment cannot be completed immediately and, on these occasions, a conditional offer may be granted. The offer will outline a set of conditions that must be fulfilled before an enrolment can become unconditional. Applicants will not be invoiced until they are unconditionally enrolled.

Variations of enrolment

If students encounter circumstances or challenges which are impacting their ability to continue with a programme or course, they should contact the Programme Lead in the first instance to discuss what options for support are available. It may be possible to suspend enrolment for a period of time, or for students to withdraw from a course and re-enrol at a later date. Terms and conditions for variations to enrolment are outlined during the enrolment process.

Withdrawals & refunds

If you are already enrolled in the programme and decide to withdraw, you have different refund entitlements depending on when you withdraw. The withdrawal scenarios include information as well as the implications on fees, scholarships and grades, relative to when a student chooses to withdraw.



Policies & governance

Below are some key policies and procedures relevant to all programmes of study at academyEX.

For further information please see our [Admission, Enrolment, Exclusion and Withdrawal Policy and Procedures](#).

academyEX Privacy Policy

academyEX Privacy Policy provides details of how student and staff privacy will be maintained.

[academyEX Tikanga](#) (Code of Conduct) is our code of conduct for all staff and students of academyEX and underpins how we all approach our shared, collective purpose of creating impactful futures.

academyEX Student Complaints Appeals Policy and Procedures

academyEX takes all student concerns seriously and should any misconduct be identified, the processes outlined in the [Student Complaints and Appeals Policy and Procedures](#), and [Student Disciplinary Policy](#) will be followed.

academyEX Student Complaints and Appeals Policy outlines the procedures to be followed if an applicant or student makes a formal complaint, or makes an appeal against academyEX's decision outcome.

Complaints and appeals are submitted in writing, with evidence to academicmanagement@academyex.com. An appropriate investigator is assigned by the academyEX Academic Team to review the complaint or appeal and conduct an investigation and identify a resolution. All groups involved in the investigation will be kept up to date throughout. Full details of the process can be found in the academyEX [Student Complaints and Appeals Policy and Procedures](#).

In the instance that a complaint is not resolved to your satisfaction by academyEX, you can raise your concern in writing with the New Zealand Qualifications Authority (NZQA).

academyEX Student Disciplinary Policy

academyEX [Student Disciplinary Policy](#) outlines student disciplinary procedures which may be followed if disciplinary action is required.

Possible consequences, if disciplinary action is required after an investigation into misconduct is undertaken, are outlined in this policy.

Credit Recognition and Transfer and Assessment of Prior Learning

academyEX has robust processes for the recognition of learning and award of credit by formal, informal (no formal curriculum, no credits earned) and non-formal (organised curriculum, no credits earned) learning. Applications will be assessed on a case-by-case basis. Please contact support@academyex.com for more information.

academyEX [Recognition and Assessment of Prior Learning Policy and Procedures](#) apply to any process that evaluates formal learning (including cross-crediting and transfer of formal learning to academyEX courses, programmes and qualifications) and the Assessment of Prior Learning (APL) by informal and non-formal learning.

Academic Integrity

academyEX is committed to maintaining and promoting the highest standards of academic integrity. All students are held to the same high standards. To help ensure that academic integrity is maintained, academyEX uses Turnitin as a plagiarism detector tool. Turnitin is also used by markers to provide feedback to students on written submissions. All written assessments must be submitted to Turnitin to generate a Similarity Report.

What is Academic Integrity?

As stated in the [academyEX Code of Conduct](#), Academic Integrity refers to intellectual honesty with regard to the use of information.

This includes but is not limited to:

- 1. Proper acknowledgment of other people's (academics, professionals, peers, relatives, ancestors) work. Acknowledgment of those who have gone before. This is also important for those who come after (readers, peers, assessors) to be able to follow and even build on your work.**
 - Use a consistent and clear process.
 - Other people's work is not limited to their writing (which should be presented as a quote and only if the writing is reproduced faithfully), but also their ideas, findings, and conclusions.
 - Do you need permission to reproduce this work?
- 2. Ensuring that your submissions, presentations, and assessments are your work.**
 - You may have employed or commissioned an editor or proofreader. If you have, make this clear and acknowledge them with their permission.
 - Others may have contributed to your submission and these contributors also need acknowledgment e.g. a programme coder, a colleague, or a collaborator.
 - If you are in doubt, get advice from programme staff.

Fees, Early Bird Saving & refunds

Programme fees

Tuition fees vary for each programme. Fees are also different for Domestic Students and International Students. See below to find out if you're a Domestic or International student.

Fees for the Programme you are enrolling in are due 7 days prior to the advertised start date of the Programme. AcademyEX complies with NZQA's Student Fee Protection Rules which protect the interests of domestic and international students. AcademyEX has a Static Trust Account with the NZQA-approved fee protection supplier, Public Trust, that ensures the safe protection of student fees over the value of \$500. For further information see the [academyEX Student Fee Protection Policy and Procedures](#).

Am I a domestic or international student?

Domestic students are New Zealand Citizens, including those living in New Zealand internationally, as well those with NZ Permanent and Resident Visas, and Australian Citizens living in New Zealand.

International students include those with NZ Permanent Resident and Resident Visas living internationally, those who have NZ Study Visas, and citizens and residents of all other countries living internationally. See more in our [Important information for international students](#) pack.

Early Bird Saving

We offer a 10% Early Bird Saving on all postgraduate programme fees for applications completed by the stated application deadline for a programme intake. Application deadlines differ for domestic and international students.

Domestic students must apply 4 weeks prior the start date of an intake.

International students must apply 8 weeks prior.

The discount will be applied to your invoice automatically through the enrolment process.

Important information about Early Bird Savings.

You cannot receive both an Early Bird Saving and a scholarship. If you receive a scholarship, the remaining amount payable will not be discounted with the 10% Early Bird Saving.

Refund entitlements

A student who has already enrolled in the programme and decides to withdraw has different refund entitlements depending on when they withdraw. At the time of application, students must agree to the academyEX Student [Terms and Conditions](#) before we can process an enrolment into the programme. These Terms and Conditions include all withdrawal scenarios and refund entitlements for the programme.

Contact us

If you have any queries or want to talk through your options please contact our Outreach Team.

For questions regarding enrolments our Enrolment Team are here to help.

For any other inquiries feel free to reach out to us below:

academyEX HQ

99 Khyber Pass Road
Grafton
Tāmaki Makaurau 1023 (Auckland 1023)
Aotearoa (New Zealand)

Phone: (09) 964 4444
hello@academyex.com

–

Postal address

PO Box 8115
Newmarket
Auckland 1149
New Zealand



Megan Bruère – Outreach Team
megan.bruere@academyex.com
+64 9 522 3893



Lisa Whittington-Slater – Outreach Team
lisa.whittington-slater@academyex.com
+64 28 413 0340



Shruti Patil – Enrolments Team
shruti.patil@academyex.com
+64 22 370 8214



Eugenia Lytvyn – Enrolments Team
eugenia.lytvyn@academyex.com
+64 22 370 8214

The background features a solid orange field. On the right side, there is a large, light purple L-shaped graphic. The horizontal bar of the 'L' is at the top, and the vertical bar extends downwards. Both bars have their outer corners cut off at a 45-degree angle. In the center of the orange field, there is a large, light purple circle. Overlaid on the left side of this circle is the text 'academyEX.com' in a bold, black, sans-serif font. The text is underlined with a thin black line.

academyEX.com